



**FW.24**



# BAGS

[ SECTION 01 ]



Page 3-11

# FLANNELS

[ SECTION 02 ]



Page 12-13

# BEANIES

[ SECTION 03 ]



Page 14-55

# CAPS

[ SECTION 04 ]



Page 56-73

# APPAREL

[ SECTION 05 ]



Page 74-79

# GEAR

[ SECTION 06 ]



Page 80-81



Established over 20 years ago, Spacecraft is rooted in the breathtaking landscapes of the Pacific Northwest. Our deep appreciation for nature's beauty inspires the connection between personal style and the environment we traverse.

We craft premium apparel, headwear and accessories designed around our mission statement to wander, create, explore.

## THE ROLLTOP



[ L → R ] Polar, Black



**THE MODULAR**



[ L - R ] Polar, Black

## THE DAYPACK



[ L → R ] Polar, Black



**THE GEAR BAG**

[ L - R ] Polar, Black

# THE RUCKSACK



[ L → R ] Polar, Black





# THE TOTE



[ L - R ] Polar, Black



# THE BASIC



[ L → R ] Polar, Black

**THE CITY TECH**



[ L - R ] Polar, Black

## THE CROSSBODY



[ L → R ] Polar, Black

## HERITAGE FLANNEL

### DETAILS

Soft Organic Cotton



[ L → R ] Navy, Black

## SPACESTRETCH FLANNEL

### DETAILS

4-Way SpaceStretch Material



[ L → R ] Navy, Black



**CANYON POM**

**DETAILS**  
Removable Pom

[ L → R ] Brown, Maroon, Blue



## SLOPES



TOP [ L → R ] Purple, Black | BOTTOM [ L → R ] Navy, Powder



**TWEEDY**



[ L → R ] Green, Grey, Navy

# CHALET



[ L → R ] Charcoal,, Cream

**POLAR**  
**DETAILS**  
Polar Fleece



[ L → R ] Cashew, Black, Purple

## FURROW



[ L → R ] Green,, Black



GRID



## BLOCK POM

### DETAILS

Removable Pom



TOP [ L → R ] Sage, Brown | BOTTOM [ L → R ] Cashew, Purple

**IVAR**



TOP [ L → R ] Cashew, Red | BOTTOM [ L → R ] Blue, Gray



# OTIS

**DETAILS**  
Recycled Poly



TOP [ L → R ] Brown, Grey, Apricot, Black | BOTTOM [ L → R ] Dusty Rose, Aloe, Cobalt, Plum

**CLOUDBURST**



## LEGENDARY POM

### DETAILS

Removable Pom



[ L → R ] Blue, Purple, Pink



**MERINO LOTUS**

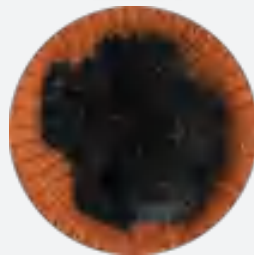
**DETAILS**

100% Merino Wool

## DOLOMITE LINED

### DETAILS

Faux Fur lined interior



[ L → R ] Blue, Orange, Forest



**COUSTEAU**



[ L → R ] Navy, Black

**DOLOMITE**



[ L → R ] Forest, Black, Blue





**DIPPER**  
**DETAILS**  
Recycled Poly

[ L → R ] Brown, Gray

## LOTUS

DETAILS  
Recycled Poly



TOP [ L → R ] Lichen, Gray, Orange, Pink, Sage | BOTTOM [ L → R ] Black, Navy, Green, Cashew

**STACK**



TOP [ L → R ] Turquoise, Orange | BOTTOM [ L → R ] Lichen, Ivory

**STRIPED OFFENDER**



[ L → R ] Navy, Charcoal

**STRIPED LOTUS**



[ L → R ] Forest, Navy, Gray



## JUNIPER POM



TOP [ L → R ] Black, Gray, Red | BOTTOM [ L → R ] Ivory, Dusty Rose, Mustard



JW



## MERINO INDEX

### DETAILS

100% Merino Wool



[ L → R ] Khaki, Black

INDEX



[ L → R ] Teal, Black

## SOLO STRIPE LOTUS



TOP [ L → R ] Copper, Mustard | BOTTOM [ L → R ] Oyster, Olive

**STRIPE INDEX**



[ L → R ] Black, Mustard, Gray



## NORDY POM

### DETAILS

Removable Pom



[ L → R ] Dusk, Navy





**SQUARE KNOT**

**DETAILS**

Wool Blend

[ L → R ] Navy, Grey, Charcoal

## SIMPLE POM

### DETAILS

Wool Blend  
Removable Pom



TOP [ L → R ] Lavender, Olive | BOTTOM [ L → R ] Blue, Copper



**ALPS CUFF**

[ L → R ] Khaki, Bone, Olive

## LANA POM



[ L → R ] Plum, Black, Ivory, Pink, Copper



**DIAMOND POM**

**DETAILS**  
Removable Pom



[ L → R ] Blue, Copper, Green



## LEGENDARY CUFF

**DETAILS**  
Recycled Poly



TOP [ L → R ] Tan, Olive | BOTTOM [ L → R ] Blue, Burnt Orange

**THROWBACK**



[ L → R ] Dusk, Twilight

**DOCK**



[ L → R ] Teal Speckle, Black, Tan, Forest





**CABLE CUFF POM**

[ L → R ] Plum, Ivory, Black



## WILD POM

### DETAILS

Removable Pom



[ L → R ] Blue, Black, Navy



**REDWOOD POM**



TOP [ L → R ] Mustard, Ivory, Black | BOTTOM [ L → R ] Plum, Gray

## SPACE LOTUS



[ L → R ] Hornet, Brownie



**OFFENDER**

**DETAILS**  
Recycled Poly

TOP [ L → R ] Black, Gray, Forest | BOTTOM [ L → R ] Peach, Blue Marl, Pink

## OUTRIDER

### DETAILS

Lined



## TRAPPER





**WARM-UP**

**DETAILS**

Polar Fleece Runner's Cap



[ L - R ] Black, Blue, Khaki



## CORDED TAQUOMA



[ L → R ] Maroon, Black, Copper

**FIN CAP**



[ L → R ] Green, Blue, Orange

**CORDED BLOCK**



TOP [ L → R ] Rose, Navy | BOTTOM [ L → R ] Green, Khaki



**STRIDE**

**DETAILS**

Lightweight Runner's Cap  
Perforated Nylon

[ L → R ] Teal, Magenta

## FAIRHAVEN

### DETAILS

Nylon



[ L → R ] Black, Olive



**BACKWOODS**

**DETAILS**  
Leather Closure



[ L → R ] Khaki, Blue, Forest

**RAINIER**



[ L → R ] Black

**SALISH**



## TOURING

### DETAILS

Nylon  
Unstructured



[ L → R ] Black, Forest

**EXPLORER**



[ L → R ] Black, Sand



## HUNTER TRUCKER



[ L → R ] Orange

**FLAPPA**



[ L → R ] Charcoal, Navy

## ELMER

### DETAILS

Polar fleece lined



[ L → R ] Grey, Beige

**COLOR BLOCK**



[ L → R ] Forest, Oyster

**LEAN-TO**



[ L → R ] Pine, Blue







**ARCTIC**

**DETAILS**

Wool

[ L → R ] Forest, Navy

## CAMP PUFFY



[ L → R ] Olive, Black, Blue

**OUTBOUND TEE**



**ARMY**



**STEEL BLUE**



**ADVENTURE SEEKER TEE**



**DARK OLIVE**



**VINTAGE WHITE**





**COLLECTIVE TEE**



**LIGHT BLUE**



**MILITARY GREEN**

**SCHEMA TEE**



**NAVY**

**LIGHTSPEED CAT TEE**



**TAN**

**OXBLOOD**

**ADVENTURE SEEKER HOODIE**



**MILITARY GREEN**

**LIGHTSPEED CAT HOODIE**



**BLACK**

**TROUTCRAFT HOODIE**



**MAUVE**



**ALPINE**



**RETRO CAT HOODIE**



**CEMENT**

**SNOWCAT HOODIE**



**ARMY**



**SANDSTONE**

**NORTH OF STELLAR HOODIE**



**STORM BLUE**



### CRAFT CLASSIC HOODIE



CHARCOAL



### HOMEGROWN HOODIE



SANDSTONE



### ELEVATION LONG SLEEVE



NAVY





## BELTS

### DETAILS

2 Way Stretch  
One size fits most  
Lightweight



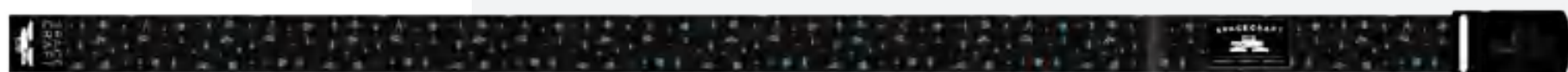
PEAKS BELT



SKYLINE BELT



SHUKSAN BELT



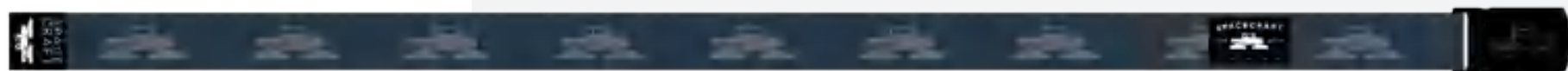
FROSTY BELT



PILCHUCK BELT



BLANCHARD BELT



SNOWCAT BELT

## BEANIE KOOZIE

**DETAILS**  
100% Acrylic



## BALACLAVA

**DETAILS**  
100% Polyester  
Lightweight  
Black or Gray





## BLANKETS

**DETAILS**  
100% Acrylic



**BLUE**



**RED**

## STICKER SHEETS

**DETAILS**  
8.5" x 11" die-cut stickers



**STYLE 1**



**STYLE 2**

## SNOWCAT STICKERS

**DETAILS**  
Medium  
Red: 7" x 3.33"

Large  
Red or Black: 13" x 6.1"







**SPACECRAFTCOLLECTIVE.COM**

**#FOLLOWTHESNOWCAT  
@SPACECRAFTCOLLECTIVE**