

AW24
CLWR

COLDCORE



Throwing IT
back, FLIPPIN'
It FORWARD

CLWR
COLD CORE

CLWR

A/W 24

COLLECTION

We capture those amazing memories you get riding with an epic crew. We're here to make the mountains more accessible in an affordable and stylish way.

Ride with your crew.
Make epic memories.

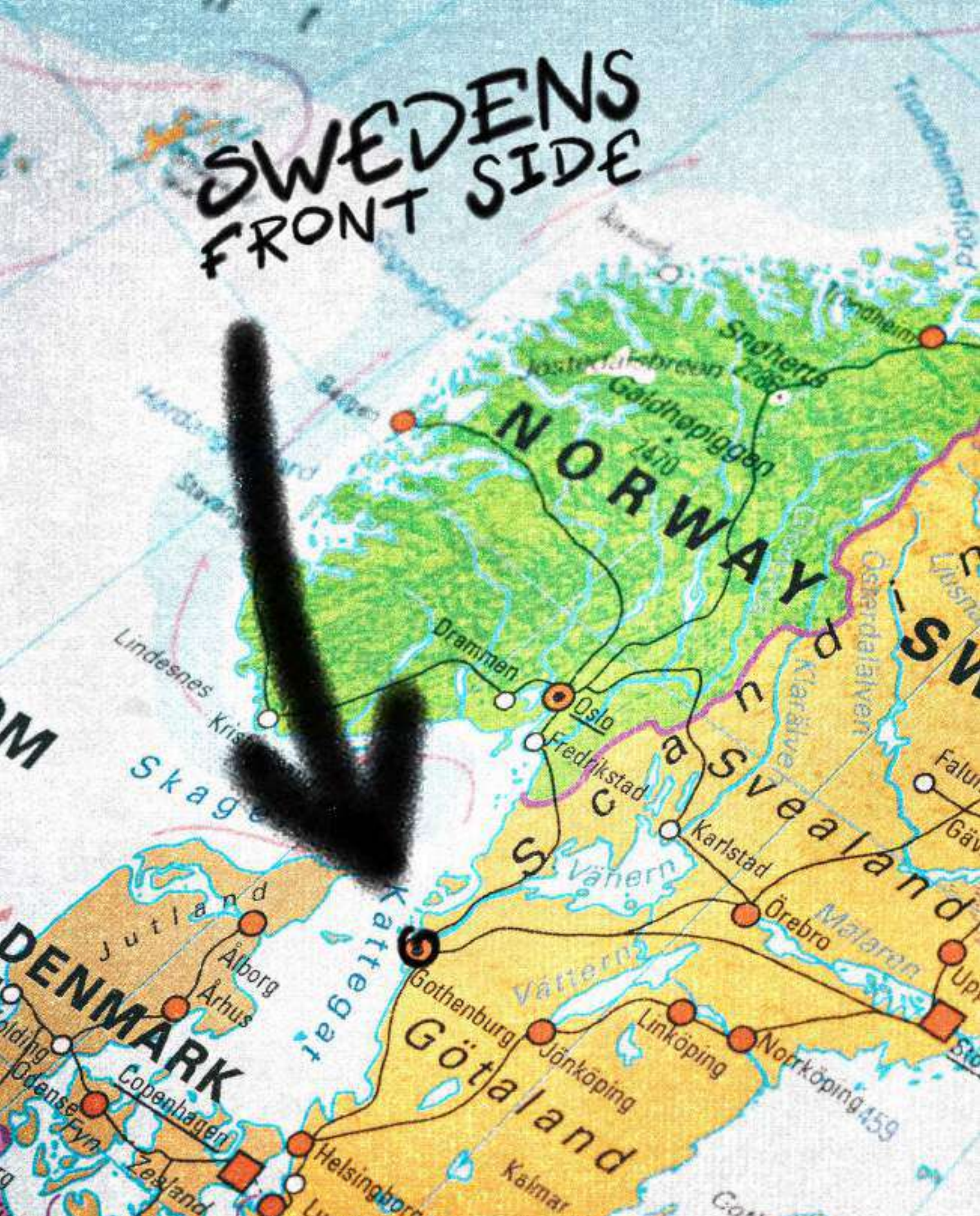
COLOURWEAR





**BORN FROM
RIDERS,
FOR RIDERS...**

SWEDENS
FRONT SIDE



FROM THE LAND OF MEATBALLS AND ABBA (Gothenburg, Sweden for the uninitiated). Having worked in the outdoor industry our whole careers, we saw the general attitude across the board turn more serious and exclusive. Sure, more people were wearing cool outdoor wear and kit had more features for your transceiver and ice axe, but what about those simply epic days shredding with your mates, nailing that next trick or skiing in powder for the first time? When we think of these kinds of days, we don't remember if our jackets were 'zip in compatible'.



CLWR

GET
OUT THERE
WITH YOUR
REFLEX



THERE'S MORE TO LIFE THAN POCKETS.

Have you noticed the attitude in snow sports has turned more serious? More exclusive? Kit has got more complicated? Sure, maybe it means we have more pockets, but is that really what life's about? More pockets? The memories we make on the mountain and in the ocean are epic, and life's too short to take yourself seriously. Stop worrying about your pockets, and get out there with your crew.

We believe that the most epic times come from being with your people and experiencing the very best nature has to offer. Whether it's at the top of the park, sending it down a tree line on a powder day or surfing glassy waves.

We don't care about competing or looking impressive, we just want to have fun with our mates. We make clothing specifically designed for riders, by riders, who have deep roots in the scene. The memories we make on the mountain and in the ocean are epic, and life's too short to take yourself seriously.

So stop worrying about your pockets, and get out there with your crew.

CL

WR

THESE ARE THE LATEST TRENDS IN THE WORLD OF FASHION
AND THE LATEST TRENDS IN THE WORLD OF FASHION
AND THE LATEST TRENDS IN THE WORLD OF FASHION



12 AW24

14 BACKGROUND 16 BEHIND THE SEAMS
18 TINTS & TONES 20 BADGE & BOND
22 SIZE & FIT 24 NEWS 26 SUSTAINABILITY

32 MEN

34 JACKETS 42 PANTS 48 SOFTGOODS

60 WOMEN

62 JACKETS 70 PANTS 74 SOFTGOODS

84 UNISEX

86 JACKETS 92 PANTS 96 SOFTGOODS

100 YOUTH

102 JACKETS 108 PANTS 112 SOFTGOODS

118 ACCESSORIES

120 HEADWEAR 132 GLOVES 136 BACKPACKS

138 OVERVIEW

140 MEN 146 WOMEN 151 UNISEX 155 YOUTH
159 ACCESSORIES

REWINDING THE TAPE

Taking a trip down memory lane with more experiences, a new perspective and the future in mind.



THROWING
IT BACK.
IPPIN. IT
FORWARD



THROWING IT BACK, FLIPPIN' IT FORWARD

Reviving our roots with a splash of future. Get ready to shred with our winter gear, boring isn't in our vocabulary.

As we welcome Autumn/Winter 2024, we're kicking it old school and blasting full speed into the future. Our gear has been designed with a sense of sweet nostalgia, summoning the golden days of freeriding and snowboarding and remixing them with a badass modern touch. Say hello to our freshest Autumn/Winter 2024 collection - Throwing it Back, Flippin' it Forward. It's like spinning the decks of time, and letting loose a bangin' mixtape that'll have you carving up the slopes with serious swag.

At CLWR, we're all about crafting gear that's as relentless as you are. Our stuff is engineered to outlast, transforming your winter kit into a timeless trove that straight-up defies the ticking clock. We bank on quality, so you can shred with confidence, season after season, trusting that your gear won't bail on you.

We've turned to Mother Nature herself for our colour inspiration, splashing our gear with a palette as vibrant, bold, and unapologetic as the snow-capped peaks and winter skies they mirror. These hues won't just snag the spotlight, but they're also designed to stand the test of time.

They're not here for a fleeting visit; they're here to leave a mark. So strap in, kit up, and prepare to redefine cool on the slopes. We don't do boring. In our AW24 collection, you won't just blend in with the snow, you'll be the king or queen of the mountain, nailing tricks and turning heads with your killer style. Come on board as we hit rewind, then hit fast forward.

Don't forget, it's not all about the ride; it's about the crew, the memories, the pulse-pounding adrenaline, and the epic tales that will be passed down generations. Choose gear that's a reflection of your passion, your wild spirit, and your undying love for the white powder. Choose CLWR, where we marry the raddest elements of the past and future to craft a winter experience that's second to none. Let's paint the mountains our way, because there's an adventure waiting - Gear up, round up your crew, it's shred time!



BEHIND THE SEAMS

CLWR CRAFTED. Crafting gear is like our jam session - where rhythm meets melody. Striking the chord between comfort and style? That's our daily gig. We give every detail our best shot, aiming for that feel-good fit. It's a blend of fashion, a touch of innovation, and a whole lot of love for what we do and who we do it for. At CLWR, every design is like our favorite track, echoing our brand's essence.

FLAIR & FUNCTION. The CLWR touch starts with the basics. We select cool, functional materials and blend them with both modern and timeless techniques. And when it comes to wrapping things up? We're both fans of our work and its keenest observers, making sure it all feels right for you.

Our cozy team, a blend of style geeks and sales buffs, work together to make sure each piece is, well, pretty darn cool. And when it's time for the final review? We might be our biggest fans, but trust us, we're also the nitpickiest. So, while we're jamming out, we're also ensuring every piece feels just right for you.

MEMBRANE MAGIC: THE INNER WORKINGS. Dying to dive into some fabric tech? Here's the lowdown on our waterproof and breathable membranes. It all starts with an outer layer (the face fabric) that's all about style and basic protection against wind and rain. To prevent this outer fabric from hoarding all the rain, we apply a PFC-free DWR (Durable Water Repellency), leaving the real hero, the membrane, to work its breathability magic.

The membrane bonded on the inside keeps the jacket waterproof, and to prevent any leaks, we use a special tape to seal the seams. And for the cherry on top, we line the inside of the jacket with a high-quality fabric, ensuring the inside feels as good as the outside looks. After all, it's what's inside that counts, right?



MEMBRANE TECHNOLOGY

Waterproofness: 10.000 mm

Breathability: 10.000 g/m²/24h

Developed to withstand whatever conditions nature might throw at you, featuring a highly waterproof yet breathable membrane that will keep you dry inside and out. The PineTech membrane is combined with resilient and carefully selected outer shell fabrics to create a high quality experience protecting you from the elements.

**DURABLE WATER REPELLENT**

In order to provide adequate protection we use special treated water repellent fabrics that has a soft touch and feel. We achieve this by PFC Free DWR (Durable Water Repellent) shell finish.

**BIONIC-FINISH ECO**

Impregnation

Bionic-Finish ECO is an ecological water repellent impregnation. Based on a recipe inspired from nature containing non-toxic silicone and polyurethane. Bionic is the future!

**RECYCLED POLYESTER**

Sustainable Textile

Recycled polyester is a sustainable way of producing polyester. By recycling polyester the production requires less energy compared to when producing virgin polyester. This makes for a more conscious and environmentally friendly process. Reducing water consumption, air and soil pollutions, diverting waste from landfills, resulting in far fewer emissions to the air. Better for nature - better for you.



TINTS & TONES





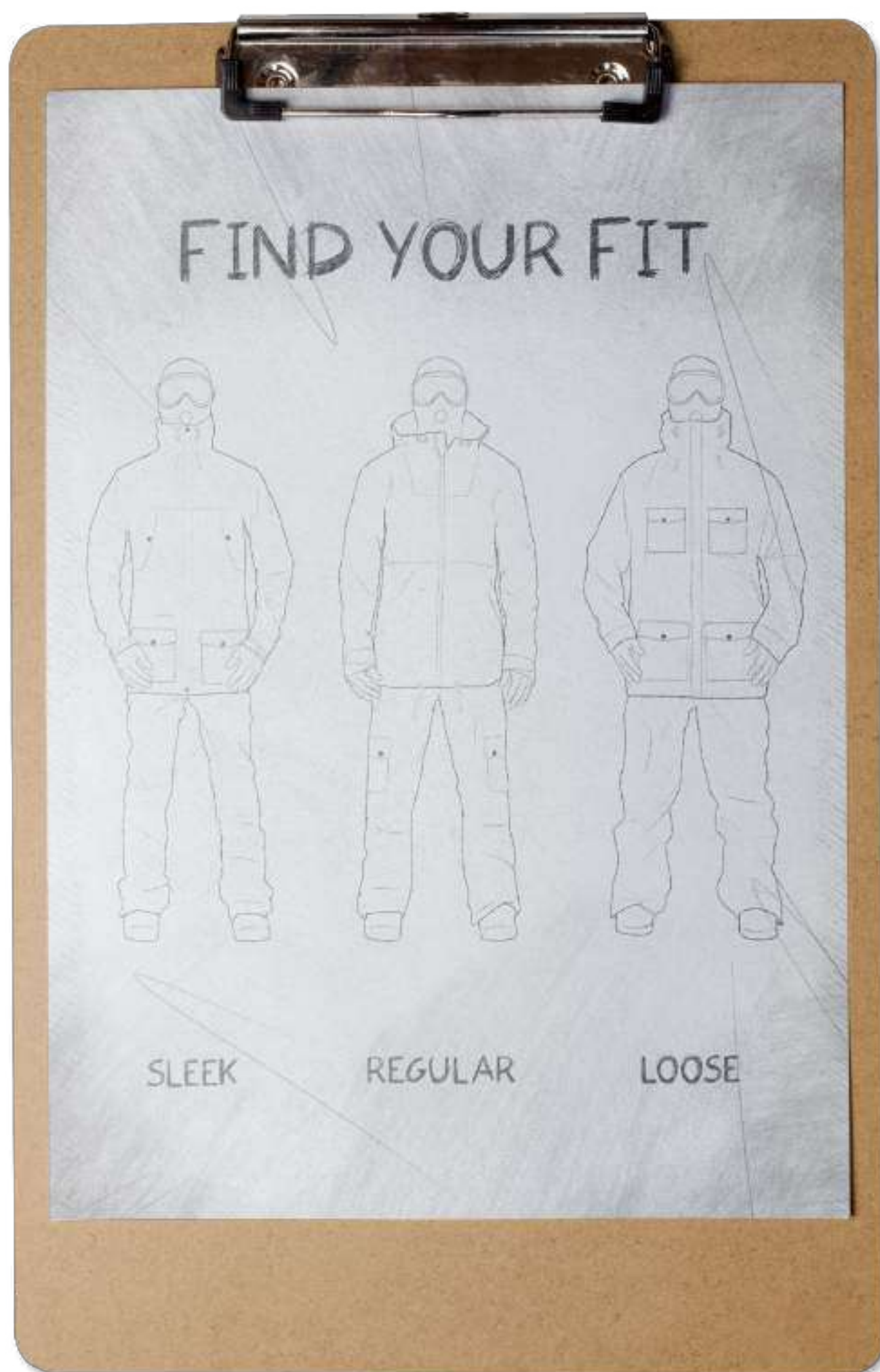


BADGE & BOND

Rolling into Autumn/Winter 2024, we're fine-tuning our vibes, peeling off old logos to create a raw, revitalized bond with our crew. It's all about evolving with style while keeping our roots firmly planted in the pow.

A rad tweak you'll spot is our remixed sticker hang tags. Emblazoned with our OG logo or graphics inspired by it, they're a solid nod to our heritage. These tags are a throwback to the good old days, while also being a badge of honor symbolizing our ride so far, and the bond we share with you, our stoked riders. And that's not all, folks. We've also given our brand badge a fresh lick of paint, unveiling a wicked mashup of the past and present that captures the spirit of our brand's journey. This re-modeled badge showcases the perfect blend of tradition and innovation, mirroring our commitment to delivering cool-looking gear that outlasts the trends.

As we usher in these changes, we want you to roll with us on this epic journey of reinvention. Our fresh branding is more than a cosmetic tweak; it's a whole new chapter in our story, a chapter that pays homage to our origins while cruising towards the future. It's a toast to growth, authenticity, and our pledge to delivering off-the-hook experiences. With CLWR, you're not just a part of the crew, you're a part of the journey. Buckle up, the best is yet to come!



SIZE 2 FIT

It's all about expressing yourself while shredding those slopes. Dive into our style guide to find your vibe:

SLEEK FIT:

When you want to scream "I'm here to slay," sleek fit's your guy. Imagine if a pro snowboarder had a baby with a top-notch tailor. Moves with you, but makes you look sharp - perfect for when you're carving tracks or flaunting at après-ski.

Round up your squad, choose your fit, and make those slopes your playground. After all, the mountain's more fun when you're in CLWR gear that feels just right!

REGULAR FIT:

The best of both worlds! Regular is that reliable mate who's cool without even trying. Straight-up style with a chilled demeanor, it's ready for both slope action and cozy cabin hangs.

LOOSE FIT:

For those who vibe with "freedom." Loose fit says, "Bring it on!" Whether you're launching off a jump or just lounging, enjoy max comfort and a sprinkle of sass.

SIZES FOR EVERY SNOW MAVERICK:

Guys, we range from XS to XXL. Ladies, we've tailored from XS to XL. Flying the unisex flag? XXS to XXL is all yours. Oh, and our future champs? Sizes from 122/128 to 156/164. Plus, our accessory hub? Mostly, it's a fab one-size fits most.



RIPPIN' A N
THIS SEASON

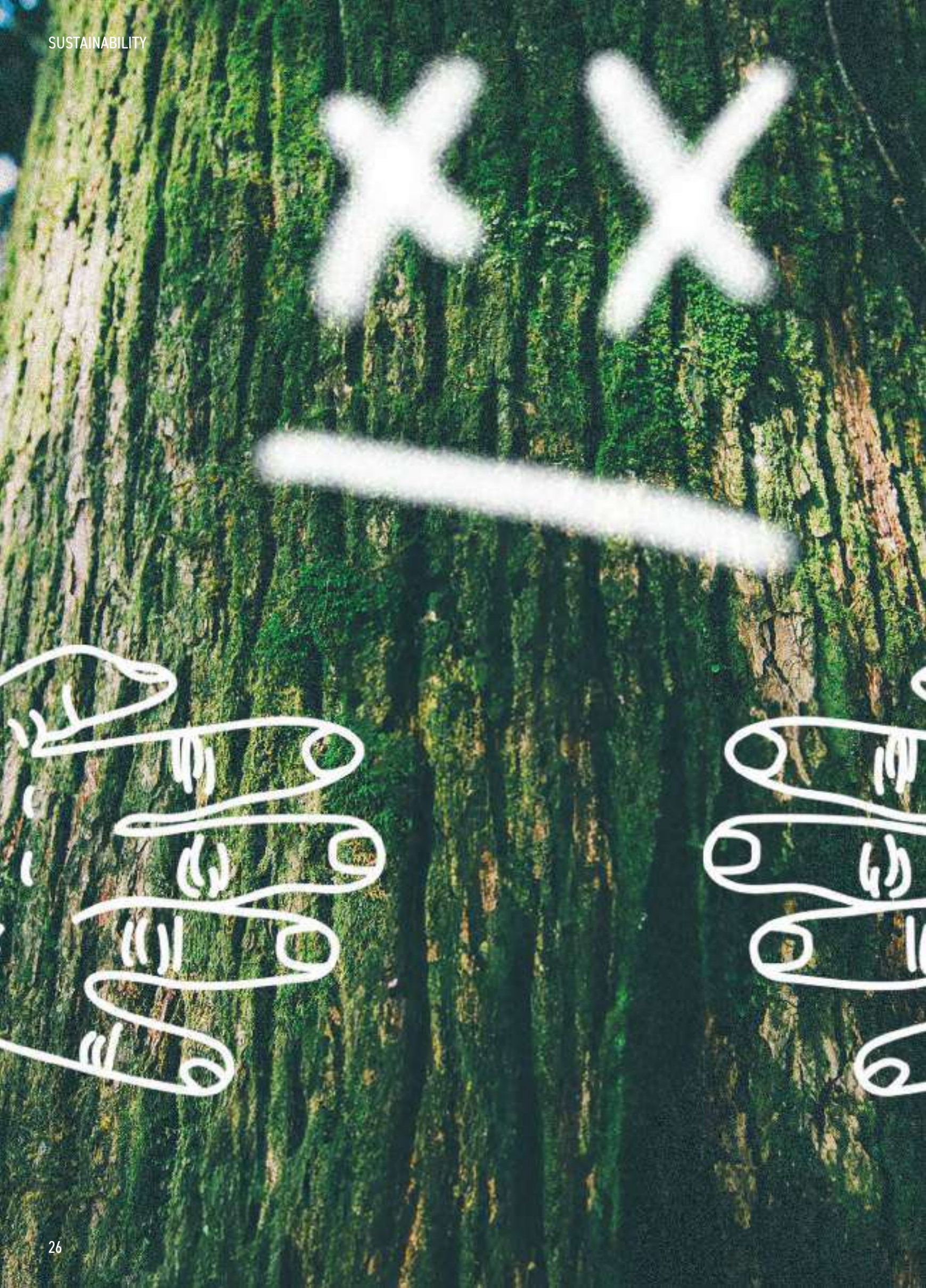
NEWS

THIS SEASON

Hold onto your boards, 'cause we're bringing the Youth collection back with a 360 flip! It's not just about the groms though, we're spreading the stoke across the board - Men, Women, and all you rad Unisex riders. Need to accessorize? Our lineup is the equivalent of a board shop sweet store, stuffed with the gnarliest gear to complete your look.

But we ain't stopping there! This season, sustainability is the name of the game. We're ollie-ing into the eco-scene with 75% sustainable fabrics rocking our collection. CLWR is all about shredding the slopes, not the planet. Get ready to gear up and ride out in style with a clear conscience.







SAVING THE PLANET...

Kinda.

Hey there, eco-warriors and tree-huggers! Let's talk about sustainability, the 'in' thing to do these days. Look, we all know the planet could use a little TLC.

Aiming for circular - here is what we do. From recycled shells to linings and padding, we're giving old materials new life. Our gear is on a mission to reduce waste and keep you warm and stylish. Our products are like that reliable friend who never lets you down. They're built to last for years, and we aim for your clothes to have more lives than a cat.

At CLWR we're all about the sustainable marathon, not the sprint. We're here to prove that quality and durability can coexist with style. It's like having a wardrobe that defies time, so you can reduce your carbon footprint to a mere whisper. We carefully select colours that'll make your heart skip a beat, season after season. Get ready to fall head over heels and stay smitten for a lifetime.

So slow down, be mindful of your choices, and build a wardrobe that aligns with your values. We all know this little blue planet is worth fighting for. Get out there with your crew and keep being green, folks.







Collection

Sketches





MEN





Jackets

FOIL ANORAK

COLOURS



022 Sand



630 DK Sage



260 Yellow



C81 Water Camo

TECHNICAL FEATURES

- Adjustable hem
- Fleece lining inside the collar and ventilation
- Two front pockets with zippers
- Front pocket with buttons
- Adjustable cuffs
- Lift pass pocket
- Fleece-lined pockets
- Articulated sleeves
- Lightly padded
- Fixed hood with vertical adjustment
- Taped seams
- Underarm ventilation
- Snow guard cuffs with thumb hole
- Zipper at side

MATERIAL

- Shell: 4-way stretch
- 2-layer construction
- Pinetech
- 94% recycled polyester
- 6% elastane
- Lining: 100% recycled polyester
- Insulation: 100% Polyester
- PFAS Free (fluorocarbon free membrane)
- Bionic finish
- 10K/10K

SIZES: XS-XXL
FIT: REGULAR
ART.NO: 7210292

SIGNATURE ANORAK

COLOURS



700 Black



553 Navy



260 Yellow

TECHNICAL FEATURES

- Adjustable hem
- Fleece lining inside the collar
- Kangaroo pocket at front with zippers in sides
- Adjustable cuffs
- Lift pass pocket
- Fleece-lined pockets
- Articulated sleeves
- Lightly padded
- Fixed hood with vertical adjustment
- Taped seams
- Underarm ventilation

MATERIAL

- Shell: Skiwear quality
- 2-layer construction
- Pinetech
- 100% Recycled polyester
- Lining: 100% Recycled polyester
- Insulation: 100% Polyester
- PFAS-free (fluorocarbon free) membrane
- Bionic finish
- 10K/10K

SIZES: XS-XXL
FIT: REGULAR/LOOSE
ART.NO: 7210297

ESSENTIAL ANORAK

COLOURS



260 Yellow



553 Navy



630 Dk Sage

TECHNICAL FEATURES

- Adjustable hem
- Fleece lining inside the collar
- Two front pockets with buttons and zippers
- Front pocket with buttons
- Adjustable cuffs
- Lift pass pocket
- Fleece-lined pockets
- Adjustable waist with drawstring
- PU stoppers
- Articulated sleeves
- Lightly padded
- Fixed hood with vertical adjustment
- Taped seams
- Underarm ventilation
- Zipper at side

MATERIAL

- Shell: Skiwear quality
- 2-layer construction Pinetech
- 100% Recycled polyester
- Lining: 100% Recycled polyester
- Insulation: 100% Polyester
- PFAS Free, fluorocarbon free membrane
- Bionic finish
- 10K/10K

SIZES: XS-XXL
FIT: REGULAR/LOOSE
ART.NO: 7210293

BLOCK JACKET

COLOURS



700 Black



022 Sand



401 Rust Red



640 Green

TECHNICAL FEATURES

- Adjustable hem
- Snow skirt
- Fixed hood with drawstring
- Fleece inside the collar
- Two front zip pockets
- Small pocket inside the front zipper
- Adjustable cuffs
- Lift pass pocket
- Pockets lined with fleece
- Articulated sleeves
- Lightly padded
- Taped seams
- Underarm ventilation
- Snow guard cuffs

MATERIAL

- Shell: Skiwear quality
- 2-layer construction
- Pinetech
- 100% Recycled polyester
- Lining: 100% Recycled polyester
- Insulation: 100% Polyester
- PFAS Free, fluorocarbon free membrane
- Bionic finish
- 10K/10K

SIZES: XS-XXL
FIT: REGULAR/LOOSE
ART.NO: 7210295

LEAGUE JACKET

COLOURS



401 Rust Red



640 Green



700 Black

TECHNICAL FEATURES

- Cuff at bottom hem
- Snow skirt
- Fleece inside the collar
- Two front zip pockets
- Small pocket inside the front zipper
- Mesh pocket inside
- Adjustable cuffs
- Lift pass pocket
- Pockets lined with fleece
- Articulated sleeves
- Lightly padded
- Fixed hood with vertical adjustment
- Taped seams
- Underarm ventilation

MATERIAL

- Shell: Oxford Skiwear quality
- 2-layer construction, Pinetech
- 100% Recycled polyester
- Lining: 100% Recycled polyester
- Insulation: 100% Polyester
- PFAS-free (fluorocarbon free) membrane
- Bionic finish
- 10K/10K

SIZES: XS-XXL
FIT: REGULAR/LOOSE
ART.NO: 7210291

FALK 2.0 JACKET

COLOURS



C82 Black Map



022 Sand



700 Black

TECHNICAL FEATURES

- Adjustable hem
- Snow skirt
- Fleece lining inside the collar and pockets
- Two front pockets with buttons and zippers
- Two upper pockets with zippers
- Small pocket on the inside of the zipper
- Mesh pocket inside
- Adjustable cuffs with thumbholes
- Lift pass pocket
- Articulated sleeves
- Lightly padded
- Fixed hood with vertical adjustment
- Taped seams
- Underarm ventilation
- Removable wipe cloth in chest pocket

MATERIAL

- Shell: Oxford Skiwear quality
- 2-layer construction
- Pinetech
- 100% recycled polyester
- Lining: 100% Recycled polyester
- Insulation: 100% Polyester
- PFAS-free (fluorocarbon free) membrane
- Bionic finish
- 10K/10K

SIZES: XS-XXL
FIT: REGULAR/LOOSE
ART.NO: 7210290

EAGLE JACKET

COLOURS



022 Sand



553 Navy



700 Black

TECHNICAL FEATURES

- Adjustable hem
- Snow skirt
- Fleece lining inside the collar and pockets
- Two front pockets with zippers in sides
- Two pockets with zippers at chest
- Small pocket on the inside of the zipper
- Mesh pocket inside
- Pocket on left sleeve
- Adjustable cuffs and thumbholes
- Lift pass pocket
- Articulated sleeves
- Lightly padded
- Fixed hood with vertical adjustment
- Taped seams
- Underarm ventilation

MATERIAL

- Shell: Skiwear quality
- 2-layer construction
- Pinetech
- 100% Recycled polyester
- Lining: 100% Recycled polyester
- Insulation: 100% Polyester
- PFAS-free (fluorocarbon free) membrane
- Bionic finish
- 10K/10K

SIZES: XS-XXL
FIT: REGULAR/LOOSE
ART.NO: 7210301

You really need a
pair of these



pants

FLIGHT PANT

COLOURS



630 Dk Sage



700 Black



C81 Water Camo



553 Navy

TECHNICAL FEATURES

- Zipped pockets in sides
- Pockets with button at the side of both legs
- Pocket with button at back
- Snow gaiters and adjustment over boots
- Articulated knees
- Sealed seams
- Waterproof and breathable
- Soft fleece lining in waist for added comfort
- Drawstring in waist
- Lightly padded
- Adjustable waist for a perfect fit
- Breathability for intense days on the slopes

MATERIAL

- Shell: Skiwear quality
- 2-layer construction, Pinetech
- 100% Recycled polyester
- Lining: 100% Recycled polyester
- Padding: 100% Polyester
- PFAS-free (fluorocarbon free) membrane
- Bionic finish
- 10K/10K

SIZES: XS-XXL
FIT: REGULAR/LOOSE
ART.NO: 7210300

SHARP PANT

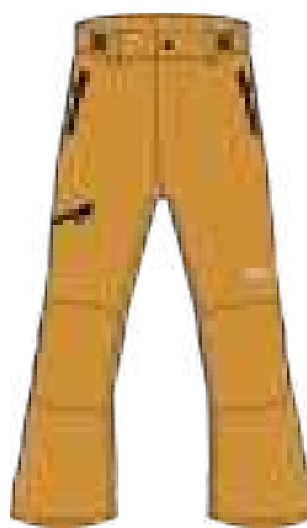
COLOURS



700 Black



C82 Black Map



260 Yellow



401 Rust Red

TECHNICAL FEATURES

- Zipped pockets in sides
- Zip pocket on the side of right leg
- Two back pockets with velcro closure
- Snow gaiters and zippers for extra adjustment
- Articulated knees
- Sealed seams
- Waterproof and breathable protection
- Extra ventilation for increased breathability
- Soft fleece lining in waist for added comfort
- Lightly padded
- Adjustable waist for a perfect fit
- Breathability for intense days on the slopes

MATERIAL

- Shell: Skiwear quality
- 2-layer construction
- Pinetech
- 100% recycled polyester
- Lining: 100% recycled polyester
- Padding: 100% Recycled Polyester
- PFAS-free (fluorocarbon free) membrane
- Bionic finish
- 10K/10K

SIZES: XS-XXL

FIT: SLEEK

ART.NO: 7210299

SLASH BIB PANT

COLOURS



700 Black



553 Navy



630 Dk Sage

TECHNICAL FEATURES

- Water protection zipper pockets in sides
- Water protection zipper at upper chest
- Zipped pocket at back
- Water protected zippered pockets at both legs
- Ankle gaiters and zippers for adjustments
- Articulated knees
- Sealed seams
- Waterproof and breathable protection
- Extra ventilation for increased breathability
- Adjustable waist for a perfect fit
- Breathability for intense days on the slopes
- Adjustable suspenders
- Reinforced knees and inside bottom of leg

MATERIAL

- Shell: Oxford Skiwear quality,
- 2-layer construction
- Pinetech
- 100% Recycled polyester.
- Lining: 100% Recycled polyester.
- Insulation: 100% Polyester.
- PFAS-free (fluorocarbon free) membrane
- Bionic finish
- 10K/10K

SIZES: XS-XXL
FIT: REGULAR/LOOSE
ART.NO: 7210296

CLIFF CHINO PANT

COLOURS



022 Sand



553 Navy

TECHNICAL FEATURES

- Pockets with zippers in sides
- Pocket with zipper at back
- Snow gaiters for adjustment over boots
- Sealed seams
- Waterproof and breathable
- Extra ventilation for increased breathability
- Soft fleece lining in waist for added comfort
- Adjustable waist for a perfect fit
- Breathability for intense days on the slopes

MATERIAL

- Shell: Oxford Skiwear quality
- 2-layer construction
- Pinetech
- 100% Recycled polyester
- Lining: 100% Recycled polyester
- Insulation: 100% Polyester
- PFAS-free (fluorocarbon free) membrane
- Bionic finish
- 10K/10K

SIZES: XS-XXL
FIT: REGULAR/LOOSE
ART.NO: 7210298

Slash through powder
in a pair chinos!





Soft goods

CORE HOOD

COLOURS



260 Yellow

553 Navy

630 Dk Sage

700 Black

TECHNICAL FEATURES

- Adjustable hood
- Drawstring with plastic-coated logo endings
- Kangaroo pocket
- Logo at chest

SIZES: XS-XXL
FIT: REGULAR
ART.NO: 7210252

MATERIAL

- 70% Sustainable cotton
- 30% Polyester
- Sweatshirt quality with brushed inside

WORKER SHIRT

COLOURS



240 Beige

TECHNICAL FEATURES

- Logo press buttons at front placket
- Lightly padded
- Pockets in sides
- Chest pockets with buttons

SIZES: XS-XXL

FIT: LOOSE

ART.NO: 7210262

MATERIAL

- Shell: 100% Polyester corduroy
- Lining: 100% Polyester
- Padding: 100% Polyester

SNAP PILE

COLOURS



C81 Water Camo

630 Dk Sage

553 Navy

700 Black

TECHNICAL FEATURES

- Buttoned placket with dull logo buttons
- Zippered chest pocket
- Kangaroo pocket with zippers on the sides

SIZES: XS-XXL

FIT: REGULAR/LOOSE

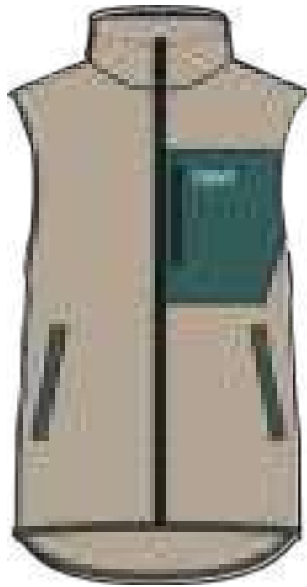
ART.NO: 7210307

MATERIAL

- 100% Recycled polyester fleece

PILE VEST

COLOURS



022 Sand



700 Black

TECHNICAL FEATURES

- Zippered chest pocket
- Zippered side pockets

MATERIAL

- 100% Recycled polyester fleece

SIZES: XS-XXL
FIT: REGULAR
ART.NO: 7210306

TEDDY HOOD 2,0

COLOURS



630 Dk Sage



401 Rust Red



700 Black



022 Sand

TECHNICAL FEATURES

- Adjustable hood
- Reinforcement on the elbows
- Kangaroo pocket on the stomach

SIZES: XS-XXL

FIT: REGULAR

ART.NO: 7010304

MATERIAL

- 100% Recycled polyester fleece

LEAGUE ZIP HOOD

COLOURS



640 Green



401 Rust Red



553 Navy

TECHNICAL FEATURES

- Adjustable hood
- Vislon zipper at front
- Drawstring with plastic-coated logo endings
- Pockets in sides
- Patch on terry logo at chest

SIZES: XS-XXL
FIT: REGULAR/LOOSE
ART.NO: 7210313

MATERIAL

- 70% Sustainable cotton
- 30% Polyester
- Sweatshirt quality with brushed inside

CORE CREW

COLOURS



260 Yellow



105 Grey Mealange



700 Black

TECHNICAL FEATURES

- Rib quality at neck, cuff and bottom hem
- Logo at chest

SIZES: XS-XXL
FIT: REGULAR
ART.NO: 7210308

MATERIAL

- 70% Sustainable cotton
- 30% Polyester
- Sweatshirt quality with brushed inside

CORE MOUNT CREW

COLOURS



700 Black

640 Green

553 Navy

TECHNICAL FEATURES

- Rib quality at neck, cuff and bottom hem
- Logo at chest

SIZES: XS-XXL
FIT: REGULAR
ART.NO: 7210260

MATERIAL

- 70% Sustainable cotton
- 30% Polyester
- Sweatshirt quality with brushed inside

CORE TEE

COLOURS



700 Black



553 Navy



001 White

TECHNICAL FEATURES

- Printed logo at chest

SIZES: XS-XXL
FIT: REGULAR
ART.NO: 7010257

MATERIAL

- 100% Sustainably sourced cotton jersey

CORE MOUNT TEE

COLOURS



553 Navy



260 Yellow



640 Green

TECHNICAL FEATURES

- Printed logo at chest

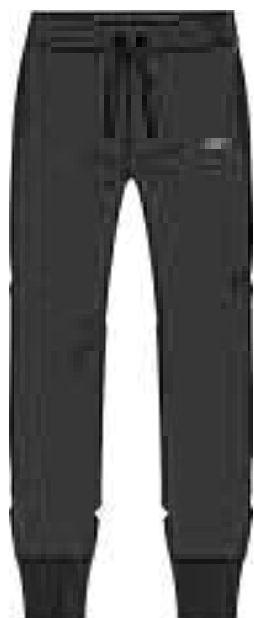
SIZES: XS-XXL
FIT: REGULAR
ART.NO: 7210259

MATERIAL

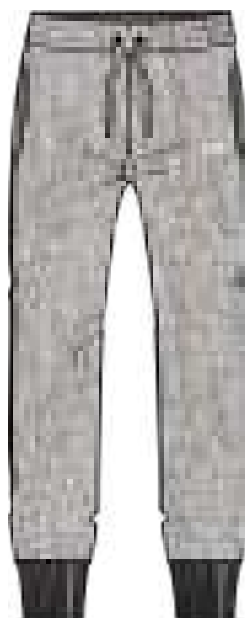
- 100% Sustainably sourced cotton jersey

CORE SWEAT PANT

COLOURS



700 Black



630 Dk Sage

TECHNICAL FEATURES

- Matching drawstring
plastic-coated logo endings
- Pockets in sides
- Logo at leg
- Elastic at leg opening

SIZES: XS-XXL
FIT: REGULAR
ART.NO: 7210311

MATERIAL

- 70% Sustainable cotton
- 30% Polyester
- Sweatshirt quality with brushed inside

WOMEN



Well, now that's
something...



Jackets

CAKE ANORAK 2,0

COLOURS



520 Lt Blue



700 Black



403 Raspberry Red



620 Lt Sage

TECHNICAL FEATURES

- Adjustable hem
- Fleece inside the collar
- Two front pockets with zippers
- Adjustable cuffs
- Lift pass pocket
- Fleece-lined pockets
- Articulated sleeves
- Lightly padded
- Fixed hood with vertical adjustment
- Taped seams
- Underarm ventilation

MATERIAL

- Shell: 4-way stretch skiwear quality
- 2-layer construction, Pinetech
- 94% recycled polyester
- 6% elastane
- Lining: 100% recycled polyester
- Insulation: 100% Polyester
- PFAS-free (fluorocarbon free) membrane
- Bionic finish
- 10K/10K

SIZES: XS-XL
FIT: REGULAR
ART.NO: 7210314

SIGNATURE ANORAK

COLOURS



553 Navy



700 Black



011 Off-White

TECHNICAL FEATURES

- Adjustable hem
- Fleece lining inside the collar
- Kangaroo pocket at front with zippers in sides
- Adjustable cuffs
- Lift pass pocket
- Fleece-lined pockets
- Articulated sleeves
- Lightly padded
- Fixed hood with vertical adjustment
- Taped seams
- Underarm ventilation

MATERIAL

- Shell: Skiwear quality,
- 2-layer construction
- Pinetech
- 100% recycled polyester
- Lining: 100% recycled polyester
- Insulation: 100% Recycled Polyester
- PFAS-free (fluorocarbon free) membrane
- Bionic finish
- 10K/10K

SIZES: XS-XL

FIT: LOOSE

ART.NO: 7210325

HOMAGE ANORAK 2,0

COLOURS



011 Off-White



700 Black



C83 Leo Lilac

TECHNICAL FEATURES

- Adjustable hem
- Fleece inside the collar
- Kangaroo pocket with zippers in sides
- Adjustable cuffs
- Lift pass pocket
- Fleece-lined pockets
- Articulated sleeves
- Lightly padded
- Fixed hood with vertical adjustment
- Taped seams
- Underarm ventilation

MATERIAL

- Shell: Skiwear quality
- 2-layer construction
- Pinetech
- 100% Recycled polyester
- Lining: 100% Recycled polyester
- Filling: 100% Polyester
- PFAS-free (fluorocarbon free) membrane
- Bionic finish
- 10K/10K

SIZES: XS-XL
FIT: REGULAR
ART.NO: 7210317

IDA JACKET

COLOURS



620 Lt Sage



700 Black



553 Navy



365 Dk Rose

TECHNICAL FEATURES

- Adjustable hem
- Snow skirt
- Fleece inside the collar
- Two front pockets with buttons and zippers
- Mesh pocket inside
- Adjustable cuffs
- Lift pass pocket
- Fleece-lined pockets
- Articulated sleeves
- Lightly padded
- Fixed hood with vertical adjustment
- Taped seams
- Underarm ventilation

MATERIAL

- Shell: Skiwear quality
- 2-layer construction
- Pinetech
- 100% Recycled polyester
- Lining: 100% Recycled polyester
- Insulation: 100% Polyester
- PFAS-free (fluorocarbon free) membrane
- Bionic finish
- 10K/10K

SIZES: XS-XL
FIT: REGULAR
ART.NO: 7210318

BISCUIT JACKET

COLOURS



700 Black



011 Off-White



C83 Leo Lilac

TECHNICAL FEATURES

- Adjustable hem
- Snow skirt
- Fleece inside the collar
- Two front pockets with zippers
- Chest pocket with zipper
- Small zip pocket inside front placket
- Inside mesh pocket
- Adjustable cuffs
- Lift pass pocket
- Fleece-lined pockets
- Articulated sleeves
- Lightly padded
- Fixed hood with vertical adjustment
- Taped seams
- Underarm ventilation

MATERIAL

- Shell: Skiwear quality
- 2-layer construction
- Pinetech
- 100% recycled polyester
- Lining: 100% recycled polyester
- Filling: 100% Recycled Polyester
- PFAS-free (fluorocarbon free) membrane
- Bionic finish
- 10K/10K

SIZES: XS-XL
FIT: REGULAR
ART.NO: 7210323



And this too!

MACARON JACKET

COLOURS



320 Lilac



365 Dk Rose



520 Lt BLue

TECHNICAL FEATURES

- Adjustable hem
- Snow skirt
- Fleece inside the collar and pockets
- Front pockets with zippers in kangaroo style
- Chest pocket with zipper
- Small zipper inside front zipper
- Mesh pocket inside
- Adjustable cuffs
- Lift pass pocket
- Articulated sleeves
- Lightly padded
- Fixed hood with vertical adjustment
- Taped seams
- Underarm ventilation
- Removable wipe cloth at chest pocket

MATERIAL

- Shell: Skiwear quality
- 2-layer construction
- Pinetech
- 100% Recycled polyester
- Lining: 100% Recycled polyester
- Filling: 100% Polyester
- PFAS-free (fluorocarbon free) membrane
- Bionic finish
- 10K/10K

SIZES: XS-XL
FIT: REGULAR
ART.NO: 7210320

CORK PANTS

COLOURS



520 Lt Blue

553 Navy

365 Dk Rose

320 Lilac

620 Lt Sage

TECHNICAL FEATURES

- Zipped pockets in sides
- Back pocket with velcro closure
- Snow gaiters and zippers adjustments
- Articulated knees
- Sealed seams
- Waterproof and breathable protection
- Extra ventilation for increased breathability
- Soft fleece lining in waist for added comfort
- Adjustable waist for a perfect fit
- Breathability for intense days on the slopes

MATERIAL

- Shell: Skiwear quality
- 2-layer construction
- Pinetech
- 100% Recycled polyester
- Lining: 100% Recycled polyester
- Padding: 100% Polyester
- PFAS-free (fluorocarbon free) membrane
- Bionic finish
- 10K/10K

SIZES: XS-XL

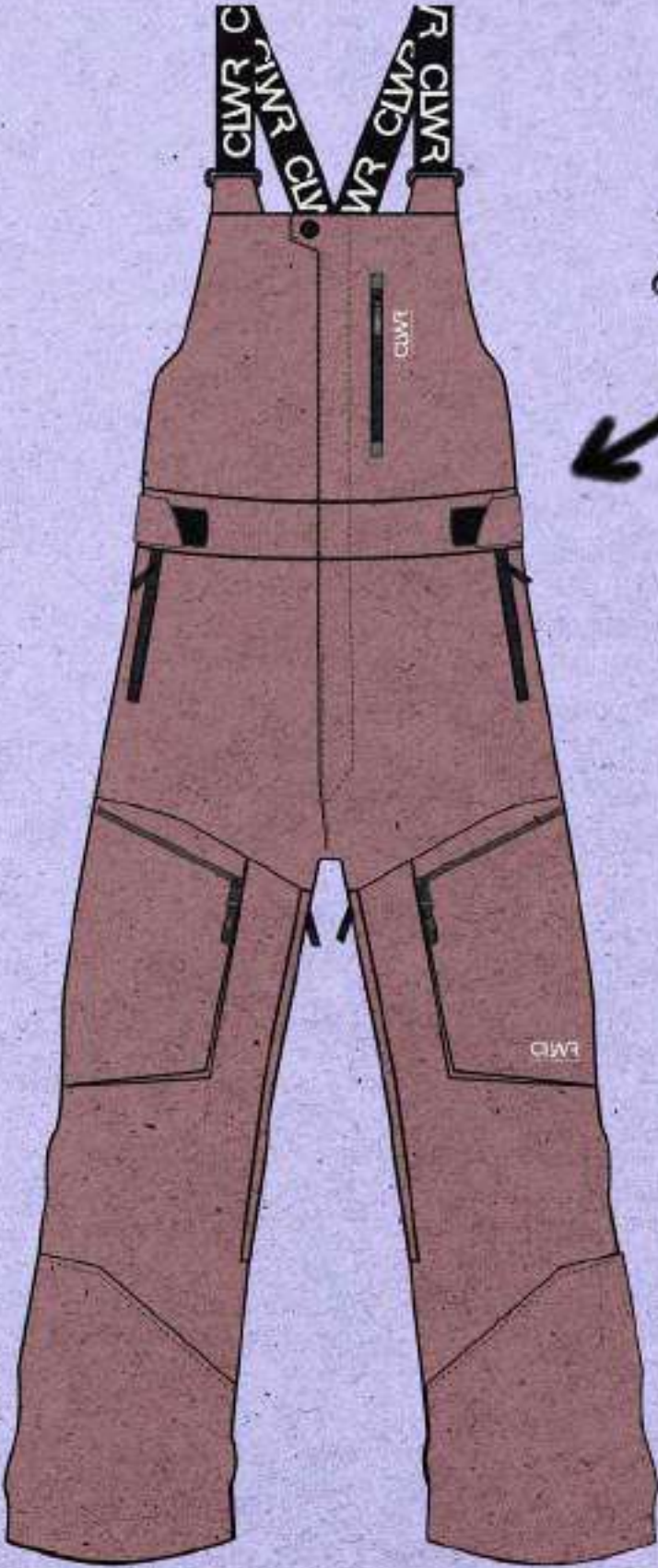
FIT: SLEEK

ART.NO: 7210322

Cork it up
at the top



pants

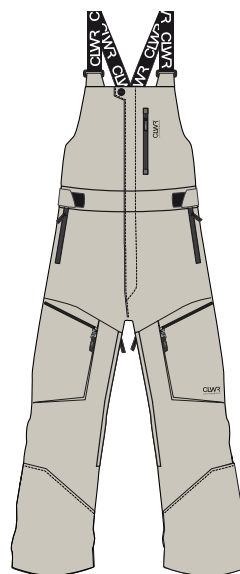


SLASH BIB PANTS

COLOURS



700 Black



011 Off-White

TECHNICAL FEATURES

- Water protection zipper pockets in sides
- Water protection zipper at upper chest
- Zipped pocket at back
- Water protected zippered pockets at both legs
- Ankle gaiters and zippers adjustments
- Articulated knees
- Sealed seams
- Waterproof and breathable protection.
- Extra ventilation for increased breathability.
- Adjustable waist for a perfect fit.
- High breathability
- Adjustable suspenders.
- Reinforced knees and inside bottom of leg

MATERIAL

- Shell: Oxford Skiwear quality
- 2-layer construction
- Pinetech
- 100% recycled polyester.
- Lining: 100% polyester.
- Insulation: 100% recycled polyester.
- PFAS-free (fluorocarbon free) membrane
- Bionic finish
- 10K/10K

SIZES: XS-XL
FIT: REGULAR
ART.NO: 7210321

OVERSIZED PILE

COLOURS



365 Dk Rose



011 Off-White

TECHNICAL FEATURES

- Vislon zipper at front
- Hood
- Kangaroo pocket at front

SIZES: XS/S-M/L
FIT: LOOSE
ART.NO: 7210350

MATERIAL

- 100% Recycled polyester fleece

pile the
moments



Soft goods

WORKER SHIRT

COLOURS



365 Dk Rose

TECHNICAL FEATURES

- Logo press buttons at front placket
- Lightly padded
- Pockets in sides
- Chest pockets with buttons

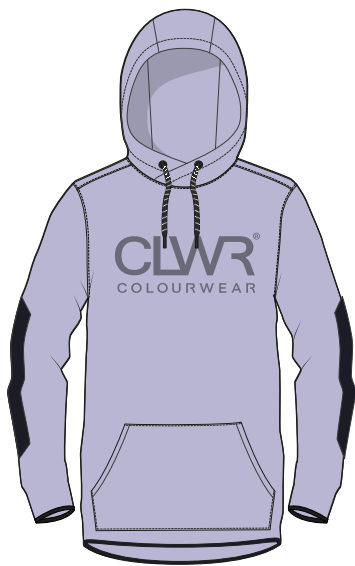
SIZES: XS-XL
FIT: REGULAR/LOOSE
ART.NO: 7210264

MATERIAL

- Shell: 100% Polyester corduroy
- Lining: 100% Polyester
- Padding: 100% Polyester

TEDDY HOOD

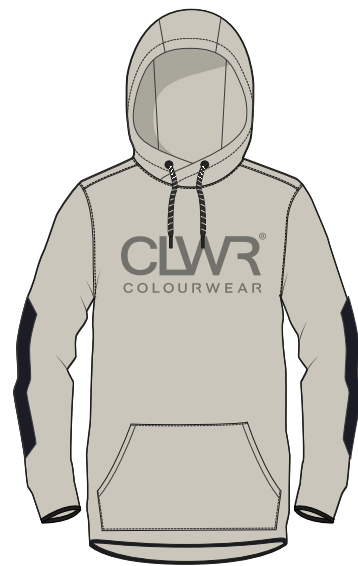
COLOURS



320 Lilac



700 Black



011 Off-White

TECHNICAL FEATURES

- Adjustable hood
- Reinforced elbows on beige colourway, lightpurple is without arm patches
- Kangaroo pocket on the stomach

SIZES: XS-XL

FIT: REGULAR

ART.NO: 7010324

MATERIAL

- 100% Recycled polyester fleece

PILE VEST

COLOURS



011 Off-White



700 Black

TECHNICAL FEATURES

- Zippered chest pocket
- Zippered side pockets

MATERIAL

- 100% Recycled polyester fleece

SIZES: XS-XL
FIT: REGULAR
ART.NO: 7210349

SNUG PILE CREW

COLOURS



320 Lilac

011 Off-White

365 Dk Rose

TECHNICAL FEATURES

- Rib at neck
- Jersey binding at cuff and bottom hem

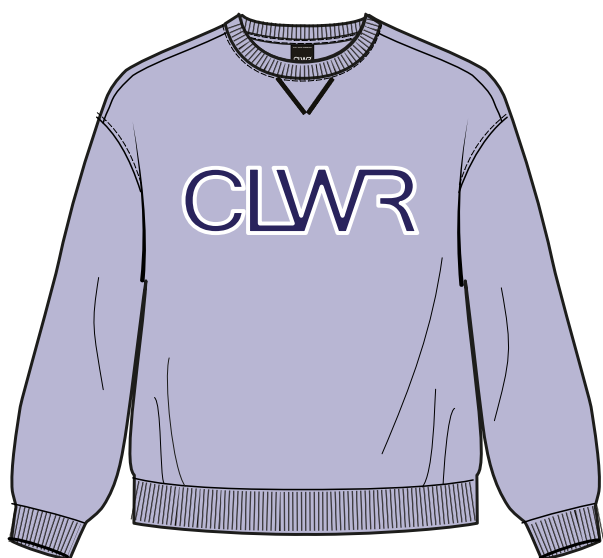
SIZES: XS-XL
FIT: REGULAR/LOOSE
ART.NO: 7210326

MATERIAL

- 100% Recycled polyester fleece

CHILL WIDE CREW

COLOURS



320 Lilac



105 Grey melange

TECHNICAL FEATURES

- Rib quality at neck, cuff and bottom hem
- Patch on terry logo at chest

SIZES: XS-XL

FIT: LOOSE

ART.NO: 7210328

MATERIAL

- 70% Sustainable cotton
- 30% Polyester
- Sweatshirt quality with brushed inside



CHILL ZIP HOODIE

COLOURS



105 Grey melange



320 Lilac



553 Navy

TECHNICAL FEATURES

- Adjustable hood
- Vislon zipper at front
- Drawstring with plastic-coated logo endings
- Pockets in sides
- Printed logo at chest

SIZES: XS-XL

FIT: LOOSE

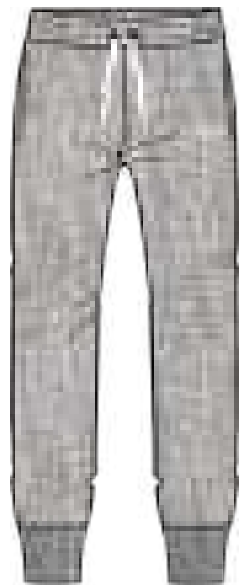
ART.NO: 7210327

MATERIAL

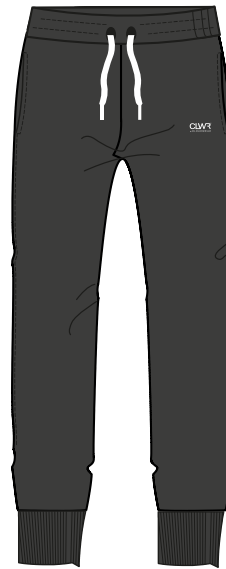
- 70% Sustainable cotton
- 30% Polyester
- Sweatshirt quality with brushed inside

CORE SWEATPANT

COLOURS



105 Grey melange



700 Black

TECHNICAL FEATURES

- Drawstring with plastic-coated logo endings
- Pockets in sides
- Logo at leg
- Elastic at leg opening

SIZES: XS-XL
FIT: REGULAR
ART.NO: 7210267

MATERIAL

- 70% Sustainable cotton
- 30% Polyester
- Sweatshirt quality with brushed inside

UNISEX



You don't know
jack until you
try this



Jackets

MOUNTAIN CARGO JACKET

COLOURS



011 Off-White



553 Navy



401 Rust Red

TECHNICAL FEATURES

- Adjustable hem
- Snow skirt
- Detachable hood with vertical adjustment
- Fleece inside the collar
- Two front cargo pockets with zippers
- Mesh pocket inside
- Adjustable cuffs
- Lift pass pocket
- Pockets lined with fleece
- Articulated sleeves
- Lightly padded
- Taped seams
- Underarm ventilation
- Snow guard cuffs with thumbhole

MATERIAL

- Shell: Oxford Skiwear quality
- 2-layer construction
- Pinetech
- 100% Recycled polyester.
- Lining: 100% Recycled polyester.
- Insulation: 100% Polyester.
- PFAS-free (fluorocarbon free) membrane
- Bionic finish
- 10K/10K

SIZES: XXS-XXL
FIT: LOOSE
ART.NO: 7210399

AQUILO ANORAK

COLOURS



700 Black



620 Lt Sage



011 Off-White

TECHNICAL FEATURES

- Adjustable hem
- Fleece inside the collar
- Two front pockets with zippers
- Adjustable cuffs
- Articulated sleeves
- Very light padded
- Fixed hood with vertical adjustment
- Taped seams

MATERIAL

- Shell: Rip stop Skiwear, Pinetech
- 100% Polyester
- Lining: 100% Recycled polyester
- Insulation: 100% Polyester
- PFAS-free (fluorocarbon free) membrane
- Bionic finish
- 10K/10K

SIZES: XXS-XXL
FIT: LOOSE
ART.NO: 7210289

BOX JACKET

COLOURS



C82 Black Map



011 Off-White



260 Yellow

TECHNICAL FEATURES

- Adjustable hem
- Snow skirt
- Fixed hood with vertical adjustment
- Side pockets with zippers
- Chest pockets with zippers
- Mesh pocket inside
- Adjustable cuffs
- Lift pass pocket
- Pockets lined with fleece
- Articulated sleeves
- Very lightly padded
- Taped seams
- Underarm ventilation
- Snow guard cuffs with thumbhole

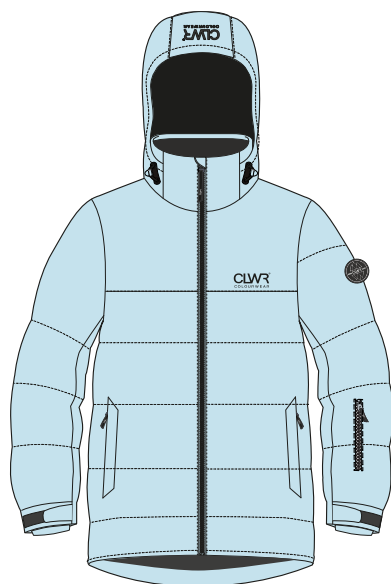
MATERIAL

- 100% Nylon Skiwear, Pinetech
- Lining: 100% Recycled polyester
- Padding: 100% Polyester
- PFAS-free (fluorocarbon free) membrane
- Bionic finish
- 10K/10K

SIZES: XXS-XXL
FIT: LOOSE
ART.NO: 7210402

POLE JACKET

COLOURS



520 Light Blue



011 Off-White

TECHNICAL FEATURES

- Adjustable hem
- Snow skirt
- Detachable hood with vertical adjustment
- Fleece inside the collar
- Side pockets with zippers
- Adjustable cuffs
- Lift pass pocket
- Pockets lined with fleece
- Articulated sleeves
- Warm padding
- Taped seams
- Underarm ventilation
- Snow guard cuffs with thumbhole

MATERIAL

- Shell: High stretch Skiwear fabric, Pinetech
- 100% Recycled polyester
- Lining: 100% Recycled polyester
- Insulation: 100% Recycled polyester
- Down like padding
- PFAS-free (fluorocarbon free) membrane
- Bionic finish
- 10K/10K

SIZES: XXS-XXL
FIT: LOOSE
ART.NO: 7210404



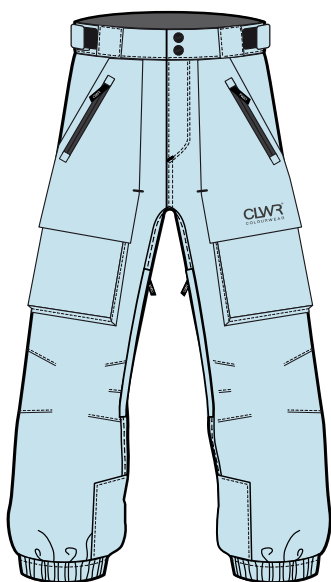
pretty sure it
fits a beer



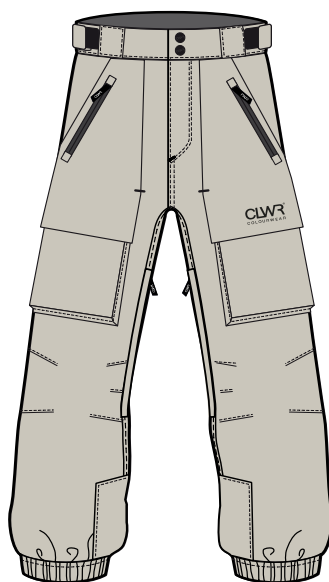
pants

MOUNTAIN CARGO PANTS

COLOURS



520 Light Blue



011 Off-White



401 Rust Red

TECHNICAL FEATURES

- Zipped pockets in sides
- Pockets with velcro closure at legs
- Elastic cuff for good fit over boots
- Articulated knees
- Sealed seams
- Waterproof and breathable protection
- Extra ventilation for increased breathability
- Soft fleece lining in waist for added comfort
- Adjustable waist for a perfect fit
- High breathability

MATERIAL

- Shell: Oxford Skiwear quality
- 2-layer construction
- Pinetech
- 100% recycled polyester.
- Lining: 100% recycled polyester.
- Insulation: 100% recycled polyester.
- PFAS-free (fluorocarbon free) membrane
- Bionic finish
- 10K/10K

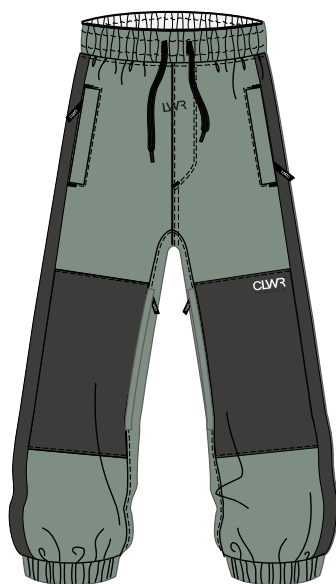
SIZES: XXS-XXL
FIT: REGULAR/LOOSE
ART.NO: 7210401

KNOX PANTS

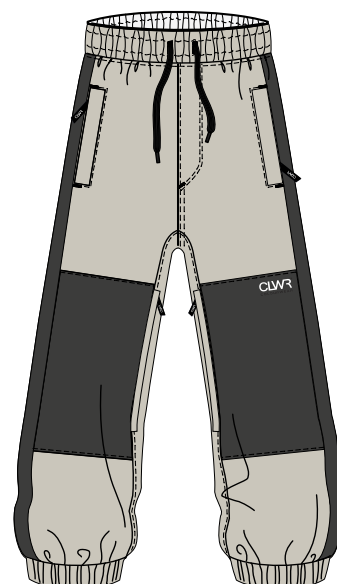
COLOURS



700 Black



620 Lt Sage



011 Off-White

TECHNICAL FEATURES

- Zipped side pockets
- Pockets with Velcro closure at back
- Elastic cuff for good fit over boots
- Elastic waist for good fit
- Articulated knees
- Sealed seams
- Waterproof and breathable protection
- Extra ventilation for increased breathability
- Soft jersey fleece lining
- High breathability

MATERIAL

- Shell: Rip stop Skiwear, Pinetech
- 100% Polyester
- Lining: 100% Recycled polyester
- Insulation: 100% Polyester
- PFAS-free (fluorocarbon free) membrane
- Bionic finish
- 10K/10K

SIZES: XXS-XXL

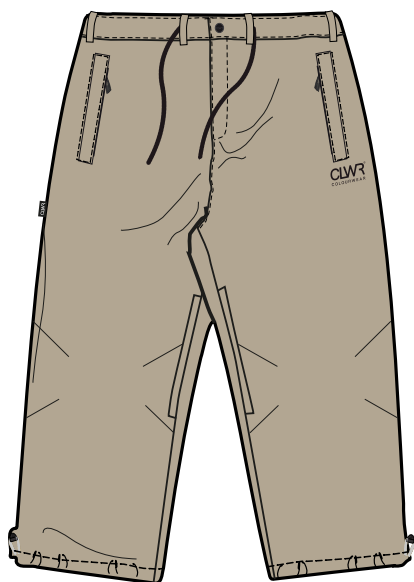
FIT: REGULAR/LOOSE

ART.NO: 7210312

700 BLACK: 7010312

BOX PANTS

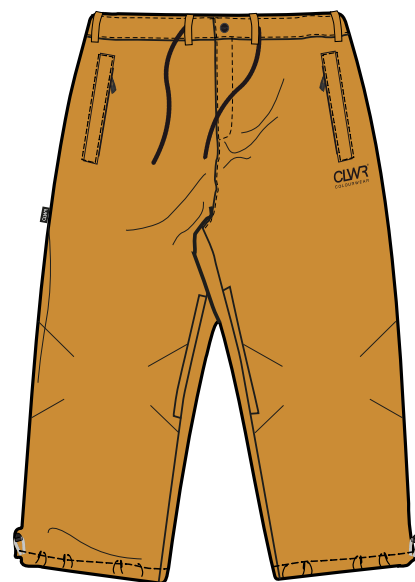
COLOURS



011 Off-White



C82 Black Map



260 Yellow

TECHNICAL FEATURES

- Zipped pockets in sides
- Pockets with zippers at back
- Adjustable strap in leg opening
- Sealed seams
- Waterproof and breathable protection
- Extra ventilation for increased breathability
- Soft fleece jersey lining
- Adjustable waist for a perfect fit
- High breathability

MATERIAL

- 100% Nylon Skiwear, Pinetech
- Lining: Polyester fleece lining
- Padding: 100% Polyester
- PFAS-free (fluorocarbon free) membrane
- Bionic finish
- 10K/10K

SIZES: XXS-XXL
FIT: LOOSE
ART.NO: 7210403



SoftGoods

BOWL HOOD

COLOURS

**365 Dk Rose****011 Off-White****700 Black****260 Yellow**

TECHNICAL FEATURES

- Adjustable hood
- Cuffs with thumbholes
- Reinforcement on elbows
- Kangaroo pocket with zipper openings
- Inset collar in the neck for wind protection

SIZES: XXS-XXL
FIT: REGULAR/LOOSE
ART.NO: 7210303

MATERIAL

- 80% Sustainable cotton
- 20% Polyester
- Sweatshirt quality with brushed inside

EST 2010 HOODIE

COLOURS



C83 Leo Lilac

630 Dk Sage

700 Black

365 Dk Rose

TECHNICAL FEATURES

- Adjustable hood
- Reinforcement on elbows
- Kangaroo pocket
- Zipper opening for pocket
- Inset collar in the neck for wind protection
- Underarm ventilation

SIZES: XXS-XXL
FIT: REGULAR/LOOSE
ART.NO: 7210302

MATERIAL

- 90% polyester
- 10% spandex
- Stretchy softshell quality with a soft interior

Establish yourself
in the slopes



YOUTH





Jackets

POW JACKET

COLOURS



553 Navy

520 Lt Blue

C82 Black Map

C83 Leo Lilac

TECHNICAL FEATURES

- Adjustable hem
- Snow skirt
- Fleece inside the collar
- Two front pockets with zippers
- Chest pocket with zipper
- Inside pocket with zipper
- Adjustable cuffs
- Lift pass pocket
- Fleece-lined pockets
- Articulated sleeves
- Lightly padded
- Detachable hood
- Taped seams
- Reflective logo

MATERIAL

- Shell: Skiwear quality
- 2-layer construction
- Pinetech
- 100% Recycled polyester
- Lining: 100% Recycled polyester
- Insulation: 100% Polyester
- PFAS-free (fluorocarbon free) membrane
- Bionic finish
- 10K/10K

SIZES: 122/128-156/164

FIT: REGULAR/LOOSE

ART.NO: 7210501

TAIL PARKA

COLOURS



C 82 Black Map



620 Lt Sage



365 Dk Roose

TECHNICAL FEATURES

- Adjustable hem
- Fleece inside the collar
- Two front pockets with zippers and button
- Small pocket with zipper inside
- Adjustable cuffs
- Lift pass pocket
- Fleece-lined pockets
- Articulated sleeves
- Lightly padded
- Detachable hood
- Taped seams
- Reflective logo

MATERIAL

- Shell: Skiwear quality
- 2-layer construction
- Pinetech
- 100% recycled polyester
- Lining: 100% Recycled polyester
- Insulation: 100% Polyester
- PFAS-free (fluorocarbon free) membrane
- Bionic finish
- 10K/10K

SIZES: 122/128-156/164
FIT: REGULAR/LOOSE
ART.NO: 7210502

SIGNATURE ANORAK

COLOURS



520 Lt BLue

365 Dk Rose

C81 Water Camo

700 Black

TECHNICAL FEATURES

- Adjustable hem
- Fleece lining inside the collar
- Kangaroo pocket at front with zippers in sides
- Adjustable cuffs
- Lift pass pocket
- Fleece-lined pockets
- Articulated sleeves
- Lightly padded
- Detachable hood
- Taped seams
- Reflective logo

MATERIAL

- Shell: Skiwear quality
- 2-layer construction
- Pinetech
- 100% Recycled polyester
- Lining: 100% Recycled polyester
- Insulation: 100% Polyester
- PFAS-free (fluorocarbon free) membrane
- Bionic finish
- 10K/10K

SIZES: 122/128-156/164

FIT: LOOSE

ART.NO: 7210503

LEAGUE JACKET

COLOURS



365 Dk Rose



700 Black



640 Green

TECHNICAL FEATURES

- Rib cuff with stripe and logo at bottom hem
- Fleece inside the collar
- Two front pockets with zippers
- Small pocket with zipper inside
- Adjustable cuffs
- Fleece-lined pockets
- Articulated sleeves
- Lightly padded
- Detachable hood
- Taped seams
- Reflective logo

MATERIAL

- Shell: Oxford Skiwear quality,
- 2-layer construction
- Pinetech
- 100% Recycled polyester.
- Lining: 100% Recycled polyester.
- Insulation: 100% Polyester.
- PFAS-free (fluorocarbon free) membrane
- Bionic finish
- 10K/10K

SIZES: 122/128-156/164

FIT: LOOSE

ART.NO: 7210504

POLE JACKET

COLOURS



700 Black



365 Dk Rose



C81 Water Camo

TECHNICAL FEATURES

- Adjustable hem
- Fleece inside the collar
- Two front pockets with zippers
- Small pocket with zipper inside
- Adjustable cuffs
- Lift pass pocket
- Fleece-lined pockets
- Articulated sleeves
- Lightly padded
- Detachable hood
- Taped seams
- Reflective logo

MATERIAL

- Shell: High stretch Skiwear fabric
- Pinetech
- 100% Recycled polyester
- Lining: 100% Recycled polyester
- Insulation: 100% Recycled polyester
- Down like padding
- PFAS-free (fluorocarbon free) membrane
- Bionic finish
- 10K/10K

SIZES: 122/128-156/164

FIT: LOOSE

ART.NO: 7210505

Line em up



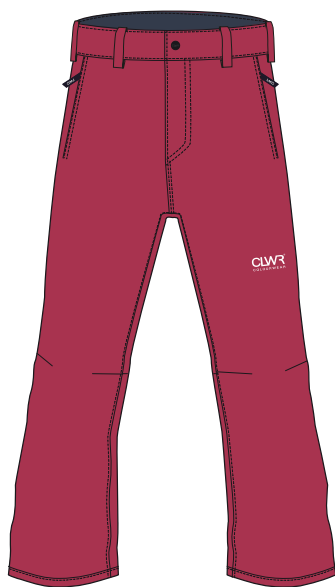
pants

LINE PANTS

COLOURS



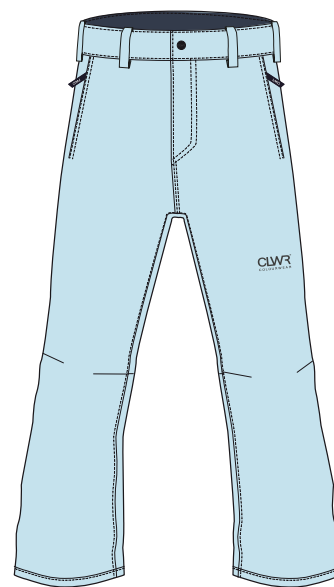
620 Lt Sage



403 Raspberry Red



C82 Black Map



520 Lt Blue

TECHNICAL FEATURES

- Pockets with zippers in sides
- Snow gaiters for extra adjustment over boots
- Articulated knees
- Sealed seams
- Waterproof and breathable protection
- Adjustable waist for a perfect fit
- High breathability
- Reinforced at inside bottom leg
- Reflective logo

MATERIAL

- Shell: Skiwear quality
- 2-layer construction
- Pinetech
- 100% recycled polyester
- Lining: 100% recycled polyester
- Padding: 100% Recycled Polyester
- PFAS-free (fluorocarbon free) membrane
- Bionic finish
- 10K/10K

SIZES: 122/128-156/164

FIT: SLEEK

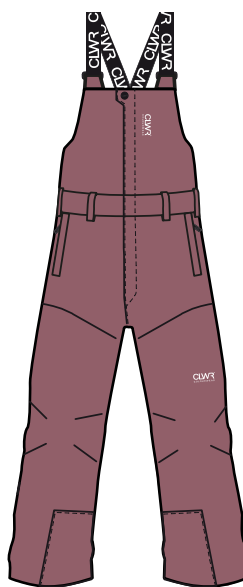
ART.NO: 7210507

SLASH BIB PANTS

COLOURS



700 Black



365 Dk Rose

TECHNICAL FEATURES

- Pockets with zippers in sides
- Ankle gaiters over boots
- Articulated knees
- Sealed seams
- Waterproof and breathable protection
- Adjustable waist for a perfect fit
- High breathability
- Adjustable suspenders
- Reinforced at inside bottom leg
- Reflective logo

MATERIAL

- Shell: Oxford Skiwear quality
- 2-layer construction
- Pinetech
- 100% Recycled polyester.
- Lining: 100% Recycled polyester.
- Insulation: 100% Polyester.
- PFAS-free (fluorocarbon free) membrane
- Bionic finish
- 10K/10K

SIZES: 122/128-156/164

FIT: REGULAR

ART.NO: 7210506



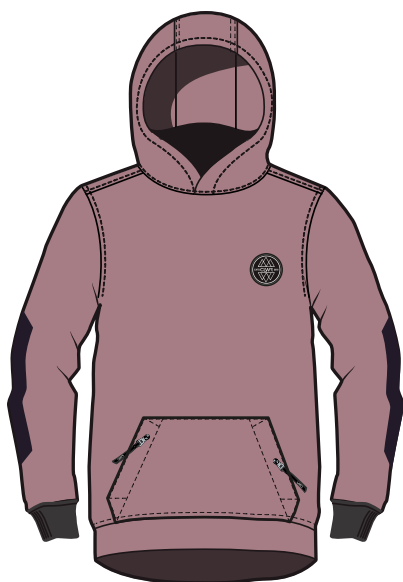
Take the
hood to the
wood



SoftGoods

EST 2010 HOODIE

COLOURS



365 Dk Rose



700 Black



C83 Leo Lilac

TECHNICAL FEATURES

- Reinforcement on elbows
- Kangaroo pocket with zipper
- Inset collar in the neck for wind protection

MATERIAL

- Stretchy softshell quality with a soft interior
- 90% polyester
- 10% spandex
- PFAS-free (fluorocarbon free) membrane
- Bionic finish
- 8K/5K

SIZES: 122/128-156/164
FIT: REGULAR/LOOSE
ART.NO: 7210508

PILE JACKET

COLOURS



022 Sand



365 Dk Rose



553 Navy

TECHNICAL FEATURES

- Zipper at front
- Jersey binding at neck, bottom hem and sleeve

MATERIAL

- 100% Recycled polyester fleece

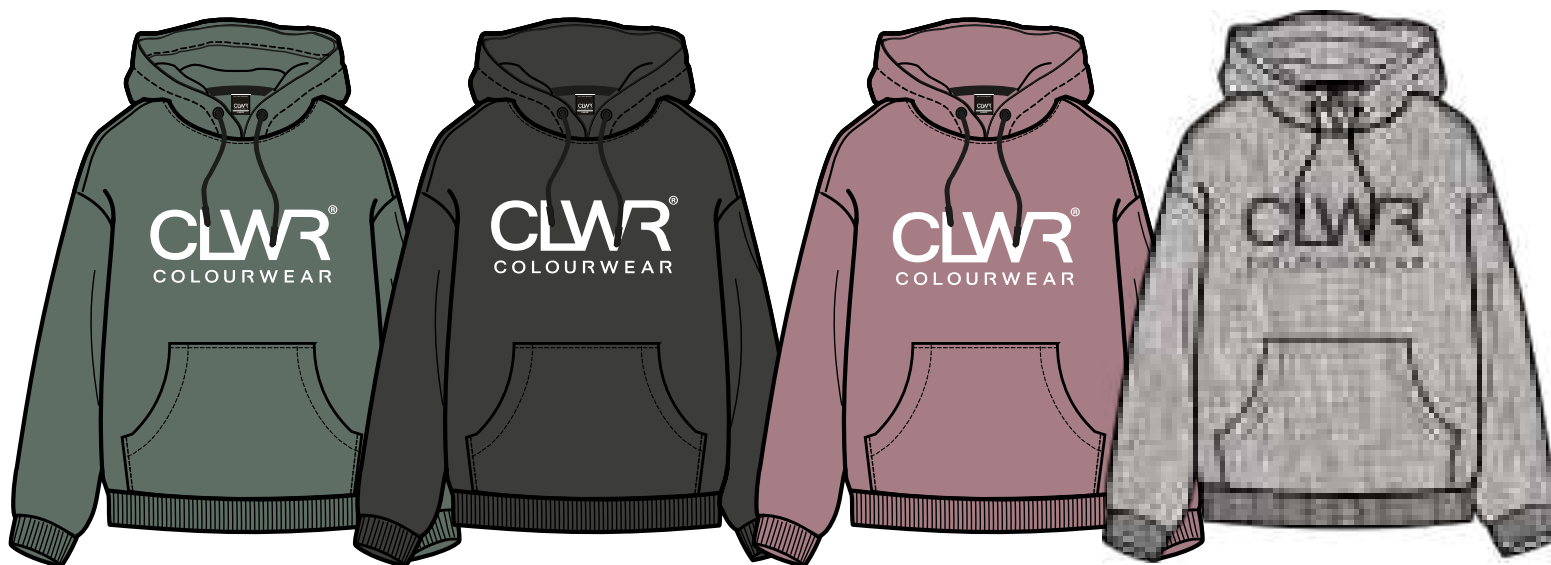
SIZES: 122/128-156/164

FIT: REGULAR

ART.NO: 7210510

CORE HOOD

COLOURS



630 Dk Sage

700 Black

365 Dk Rose

105 Grey Melange

TECHNICAL FEATURES

- Hoodie
- Kangaroo pocket
- Logo at chest

SIZES: 122/128-156/164

FIT: REGULAR

ART.NO: 7210511

MATERIAL

- 70% Sustainable cotton
- 30% Polyester
- Sweatshirt quality with brushed inside

CORE TEE

COLOURS



700 Black



365 Dk Rose



630 Dk Sage

TECHNICAL FEATURES

- Printed logo at chest

SIZES: 122/128-156/164

FIT: REGULAR

ART.NO: 7210512

MATERIAL

- 100% Sustainably sourced cotton jersey



ACCESSORIES



U BADGE BEANIE

COLOURS



630 Dk Sage

365 Dk Rose

105 Grey melange

700 Black

TECHNICAL FEATURES

- Rib knit quality
- Badge in PU quality "leather like"

SIZES: ONE SIZE
FIT: REGULAR
ART.NO: 7010344

MATERIAL

- 100% Acrylic

(U+Y) BONK BEANIE

COLOURS



640 Green

105 Grey Melange

553 Navy

260 Yellow

TECHNICAL FEATURES

- Rib knit quality
- Badge at front

SIZES: ONE SIZE & YOUTH

FIT: REGULAR

ART.NO: (U) 7210601

(Y) 7210610

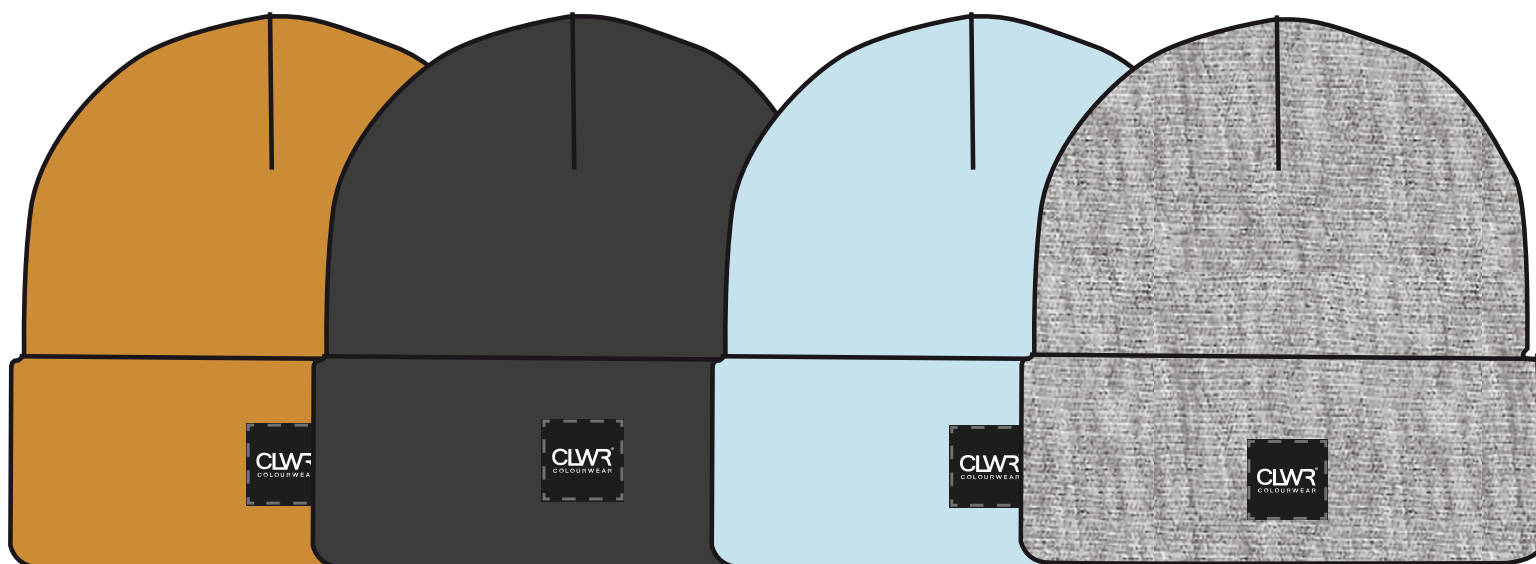
MATERIAL

- 100% Acrylic

YOU'RE BONKERS
if YOU don'T GET
It IN YOUTH

(U+Y) PUPPET BEANIE

COLOURS



260 Yellow

700 Black

520 Lt Blue

105 Grey melange

TECHNICAL FEATURES

- Cosy and warm knitted quality
- Woven label at front

SIZES: ONE SIZE & YOUTH

FIT: REGULAR

ART.NO: (U) 7210197

(Y) 7210611

MATERIAL

- 100% Acrylic

*Y not gEt iT
In yOuTh?*

U CHUNKY BEANIE

COLOURS



320 Lilac

403 Raspberry Red

520 Lt Blue

700 Black

TECHNICAL FEATURES

- Cosy and warm oversized beanie
- Oversize knit, soft and slightly hairy yarn
- Woven label folded over edge

SIZES: ONE SIZE
FIT: OVERSIZED
ART.NO: 7210602

MATERIAL

- 100% Acrylic

U STRIX BEANIE

COLOURS



320 Lilac

553 Navy

700 Black

630 Dk Sage

TECHNICAL FEATURES

- Warm beanie with wool and CLWR logo
- Pompom on top
- Woven label in side

SIZES: ONE SIZE
FIT: REGULAR
ART.NO: 7210195

MATERIAL

- 50% Wool
- 47% Acrylic
- 3% Spandex

(U+Y) FLUFFBALL BEANIE

COLOURS



260 Yellow

700 Black

365 Dk Rose

630 Dk Sage

TECHNICAL FEATURES

- Warm and soft beanie with COLOURWEAR logo
- Pom-pom on top
- Woven label in side

SIZES: ONE SIZE & YOUTH

FIT: REGULAR

ART.NO: (U) 7210603

(Y) 7210612

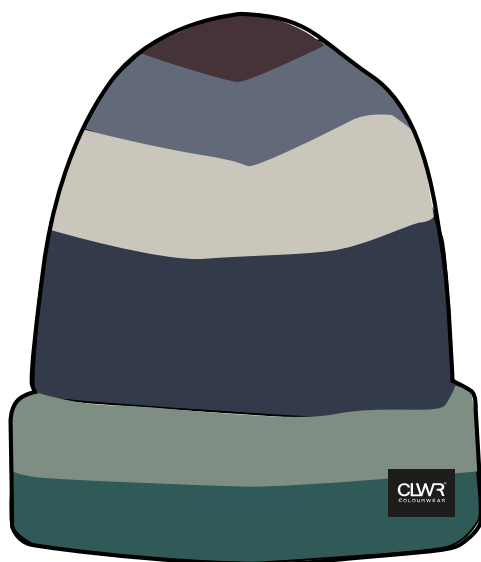
MATERIAL

- 100% Acrylic

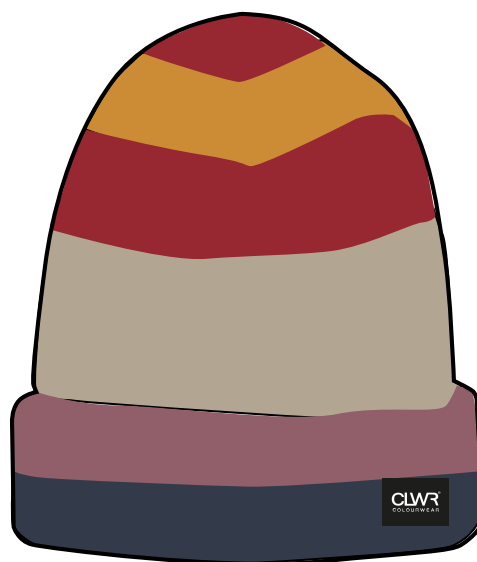
comes in youth
fluffball sizes

U CRUSH BEANIE

COLOURS



553 Navy



403 Raspberry Red

TECHNICAL FEATURES

- Warm and soft beanie
- Slightly hairy, knitted quality
- Woven label at front

SIZES: ONE SIZE
FIT: REGULAR
ART.NO: 7210604

MATERIAL

- 62% Acrylic
- 25% Nylon
- 10% Polyester
- 3% Spandex

U HEADBANGER BAND

COLOURS



355 Dk Rose



260 Yellow



700 Black

TECHNICAL FEATURES

- Warm and soft headband with CLWR logo
- Woven label in side

SIZES: ONE SIZE
FIT: REGULAR
ART.NO: 7210605

MATERIAL

- 100% Acrylic

U THE TUBE

COLOURS



365 Dk Rose



700 Black



260 Yellow

TECHNICAL FEATURES

- Warm and soft neckwarmer in microfleece
- Logo at front and woven label in side

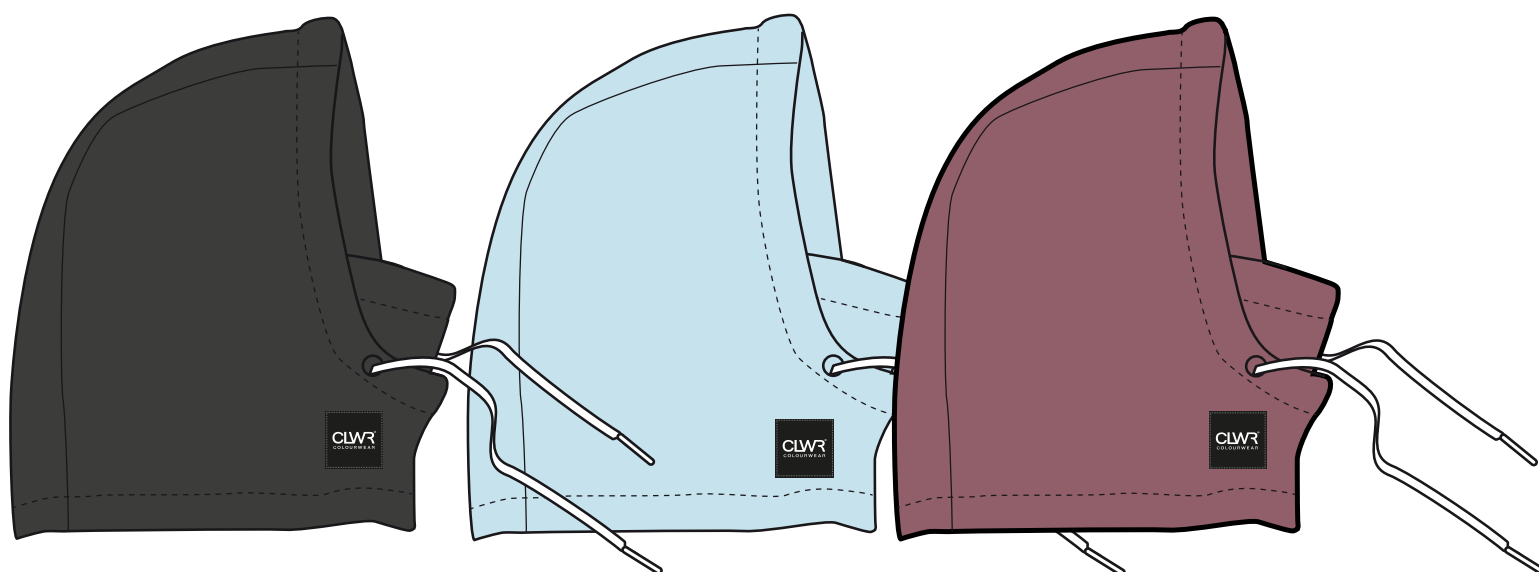
MATERIAL

- 100% Polyester

SIZES: ONE SIZE
FIT: REGULAR
ART.NO: 7210606

(U+Y) SO FLUFFY HOOD

COLOURS



700 Black

520 Lt Blue

365 Dk Rose

TECHNICAL FEATURES

- Warm and soft adjustable hood in fleece
- Woven logo at side

MATERIAL

- 100% Polyester

SIZES: ONE SIZE & YOUTH
FIT: LOOSE/OVER HELMET
ART.NO: (U) 7210607+
(Y) 7210613

YOUTH SO
FLUFFY TO

U CORD CAPTONIA

COLOURS



640 Green

840 Brown

TECHNICAL FEATURES

- Embroidered logo
- Plastic snap back closure
- Woven flag label at back

SIZES: ONE SIZE
FIT: REGULAR
ART.NO: 7210608

MATERIAL

- 100% Cotton Corduroy

U PILE CAPSTER

COLOURS



022 Sand



700 Black

TECHNICAL FEATURES

- Elastic adjuster with stopper at back
- Woven logo at front

SIZES: ONE SIZE
FIT: REGULAR
ART.NO: 7210609

MATERIAL

- 100% Polyester pile

U POWDER GLOVE

COLOURS



700 Black



365 Dk Rose



011 Off-White

TECHNICAL FEATURES

- Waterproof membrane
- Inner glove with warm synthetic lining
- Adjustable wrist
- Reinforced palm

MATERIAL

- Shell: 100% Recycled polyester
- PFAS free membrane
- 10K/10K
- Cuff: 100% Nylon
- Palm: 62% Polyurethane 38% Polyester
- Lining: 100% Polyester
- Insulation: 100% Polyester
- Reinforcement on thumb and index finger: 100% Polyurethane

SIZES: 7-11
FIT: REGULAR
ART.NO: 7210345

U POWDER MITTEN

COLOURS



700 Black



011 Off-White



365 Dk Rose

TECHNICAL FEATURES

- Waterproof membrane
- Inner mitten with warm synthetic lining
- Adjustable wrist
- Reinforced palm

MATERIAL

- Shell: 100% Recycled polyester
- PFAS free membrane
- 10K/10K
- Cuff: 100% Nylon
- Palm: 62% Polyurethane 38% Polyester
- Lining: 100% Polyester
- Insulation: 100% Polyester
- Reinforcement on thumb and index finger: 100% Polyurethane

SIZES: 7-11
FIT: REGULAR
ART.NO: 7210347

U GRAB LITE GLOVE

COLOURS



700 Black



365 Dk Rose



011 Off-White

TECHNICAL FEATURES

- Waterproof membrane
- Logo print with sticky surface at inside palm
- Adjustable wrist

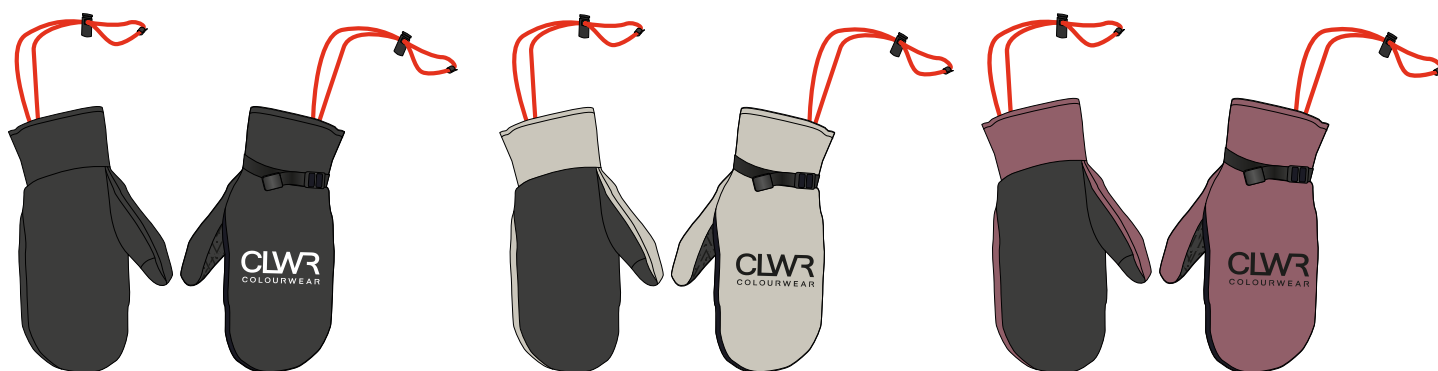
SIZES: 7-11
FIT: REGULAR
ART.NO: 7210615

MATERIAL

- Shell 1: 95% Nylon 5% Elasthan
- Shell 2: 100% Polyester
- Cuff: 100% Nylon
- Palm: 53% Polyurethane 25% Cotton 19% Polyester 3% Viscose

Y POW MITTEN

COLOURS



700 Black

011 Off-White

365 Dk Rose

TECHNICAL FEATURES

- Waterproof membrane
- Warm synthetic lining
- Adjustable wrist
- Inside palm fabric with good grip

SIZES: 5-7
FIT: REGULAR
ART.NO: 7210614

MATERIAL

- Shell 1: 100% Recycled polyester
- PFAS free membrane
- 10K/5K
- Palm: 65% Polyurethane, 35% Polyester

BACKPACK ESSENTIAL

COLOURS



700 Black



365 Dk Rose



011 Off-White

TECHNICAL FEATURES

- Old school backpack
- 20L
- Laptop pocket inside
- Printed CLWR logo
- Small pocket with zipper and woven logo

SIZES: ONE SIZE
FIT: REGULAR
ART.NO: 7210220

MATERIAL

- 100% Recycled polyester

SKATE BACKPACK

COLOURS



700 Black



365 Dk Rose

TECHNICAL FEATURES

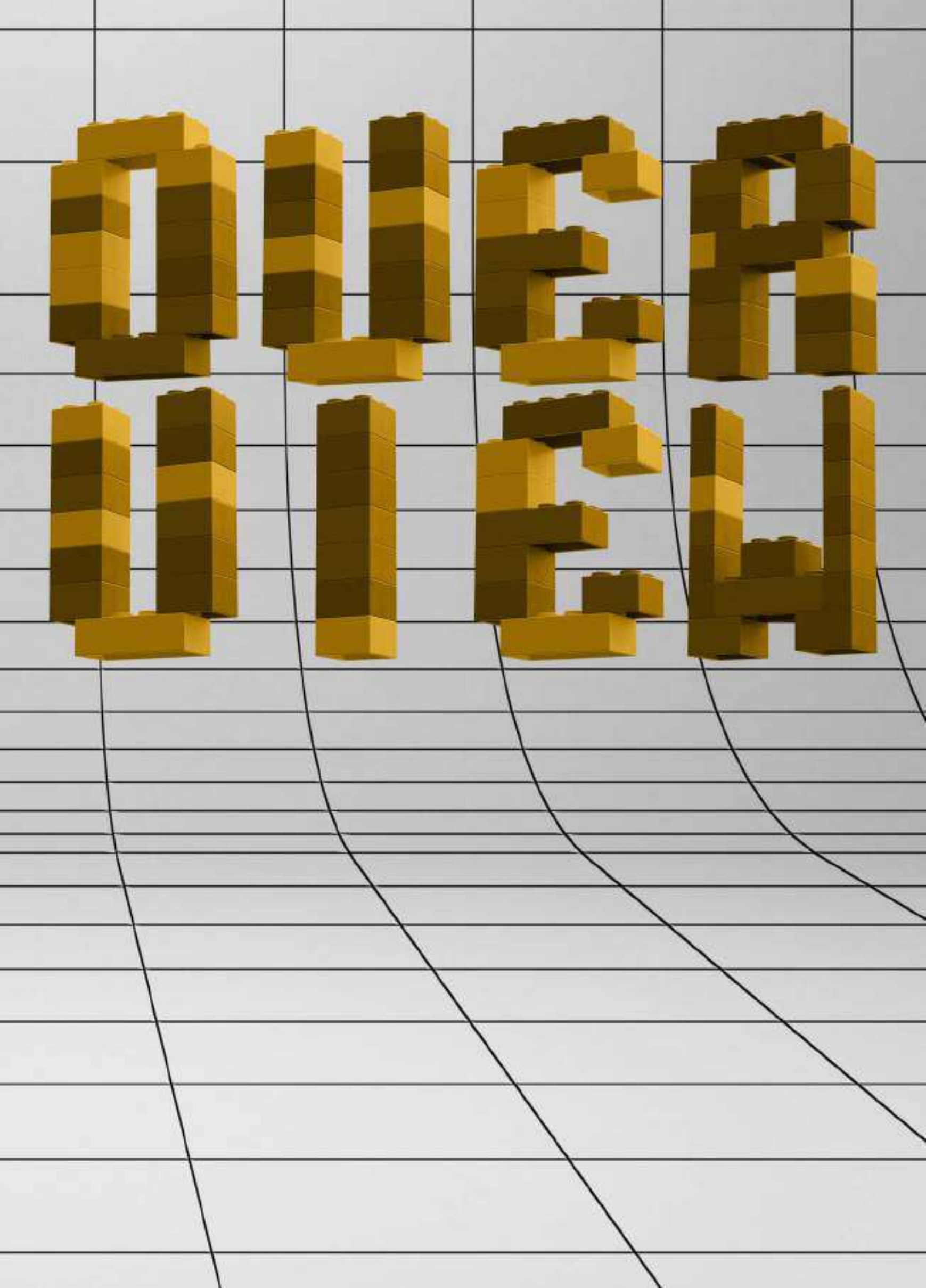
- 30L
- Laptop pocket inside
- Small mesh pocket inside
- Straps for skateboard

SIZES: ONE SIZE
FIT: REGULAR
ART.NO: 7210221

MATERIAL

- 100% Recycled polyester





MEN

WOMEN

UNISEX

YOUTH

ACCESSORIES



ART.NO: 7210292



ART.NO: 7210292



ART.NO: 7210292



ART.NO: 7210292



ART.NO: 7210292



ART.NO: 7210297



ART.NO: 7210297



ART.NO: 7210297



ART.NO: 7210291



ART.NO: 7210291



ART.NO: 7210291



ART.NO: 7210301



ART.NO: 7210301



ART.NO: 7210301



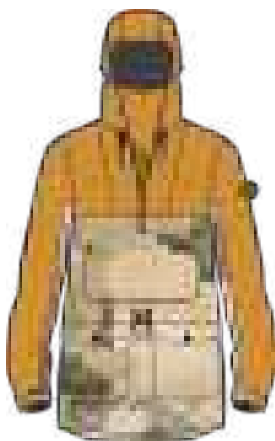
ART.NO: 7210290



ART.NO: 7210290



ART.NO: 7210290



ART.NO: 7210293



ART.NO: 7210293



ART.NO: 7210293



ART.NO: 7210295



ART.NO: 7210295



ART.NO: 7210295



ART.NO: 7210295



ART.NO: 7210296



ART.NO: 7210296



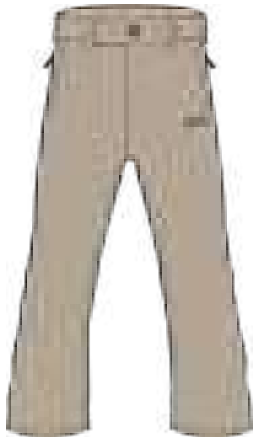
ART.NO: 7210296



ART.NO: 7210301



ART.NO: 7210298



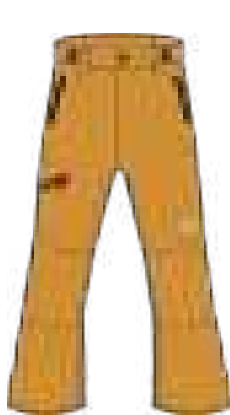
ART.NO: 7210298



ART.NO: 7210298



ART.NO: 7210299



ART.NO: 7210299



ART.NO: 7210299



ART.NO: 7210300



ART.NO: 7210300



ART.NO: 7210300



ART.NO: 7210300



ART.NO: 7210300



ART.NO: 7010304



ART.NO: 7010304



ART.NO: 7010304



ART.NO: 7010304



ART.NO: 7210252



ART.NO: 7210252



ART.NO: 7210252



ART.NO: 7210252



ART.NO: 7210252



ART.NO: 7210307



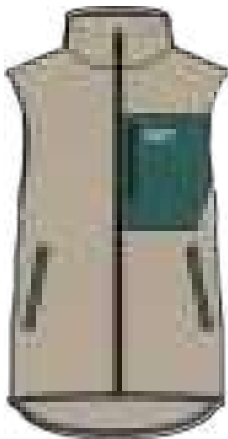
ART.NO: 7210307



ART.NO: 7210307



ART.NO: 7210307



ART.NO: 7210306



ART.NO: 7210306



ART.NO: 7210313



ART.NO: 7210313



ART.NO: 7210313



ART.NO: 7210260



ART.NO: 7210260



ART.NO: 7210260



ART.NO: 7210308



ART.NO: 7210308



ART.NO: 7210308



ART.NO: 7210259



ART.NO: 7210259



ART.NO: 7210259



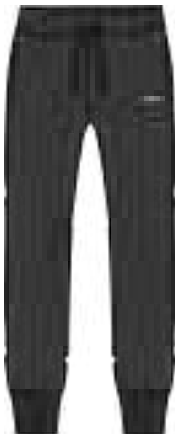
ART.NO: 7010257



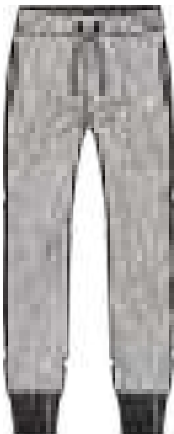
ART.NO: 7010257



ART.NO: 7010257



ART.NO: 7210311



ART.NO: 7210311



ART.NO: 7210262

  suave styles for  lads who don't just walk the walk' but talk the talk

MEN
WOMEN
UNISEX
YOUTH
ACCESSORIES



ART.NO: 7210314



ART.NO: 7210314



ART.NO: 7210314



ART.NO: 7210314



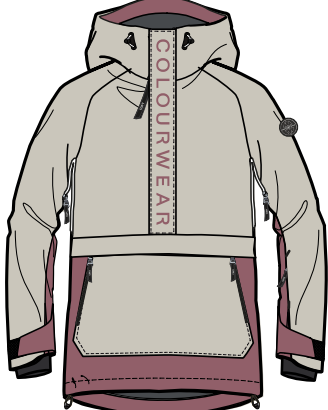
ART.NO: 7210314



ART.NO: 7210325



ART.NO: 7210325



ART.NO: 7210325



ART.NO: 7210318



ART.NO: 7210318



ART.NO: 7210318



ART.NO: 7210318



ART.NO: 7210317



ART.NO: 7210317



ART.NO: 7210317



ART.NO: 7210320



ART.NO: 7210320



ART.NO: 7210320



ART.NO: 7210320



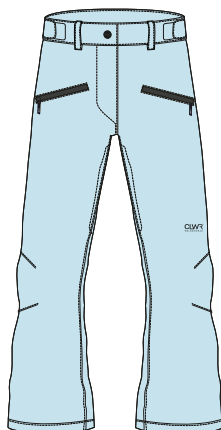
ART.NO: 7210323



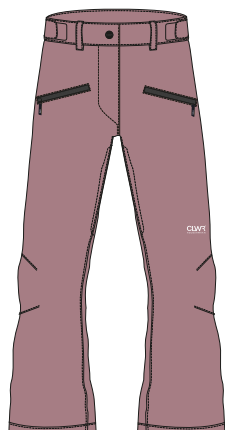
ART.NO: 7210323



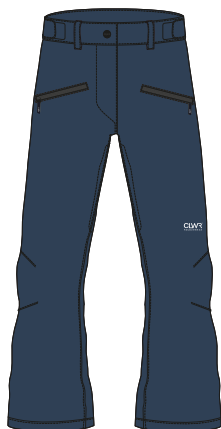
ART.NO: 7210323



ART.NO: 7210322



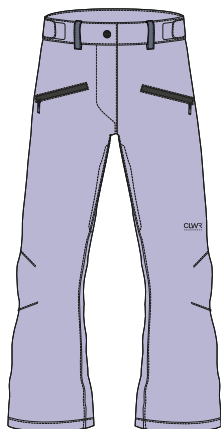
ART.NO: 7210322



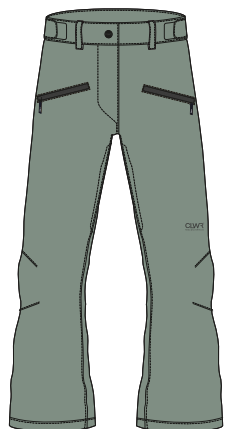
ART.NO: 7210322



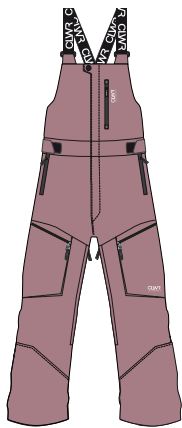
ART.NO: 7210322



ART.NO: 7210322



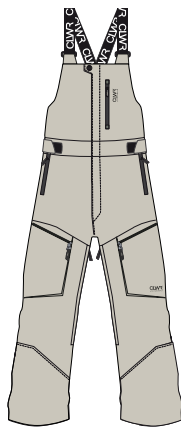
ART.NO: 7210322



ART.NO: 7210321



ART.NO: 7210321



ART.NO: 7210321



ART.NO: 7210350



ART.NO: 7210350



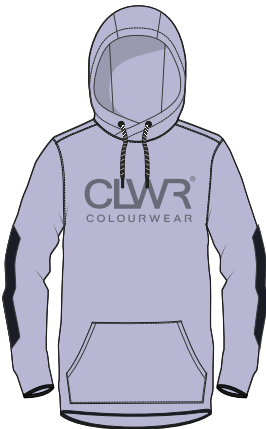
ART.NO: 7210350



ART.NO: 7210349



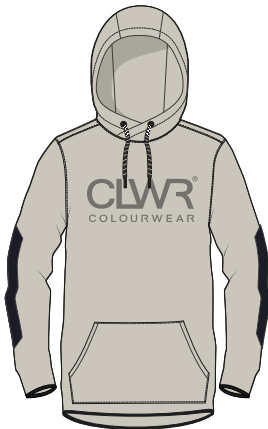
ART.NO: 7210349



ART.NO: 7010324



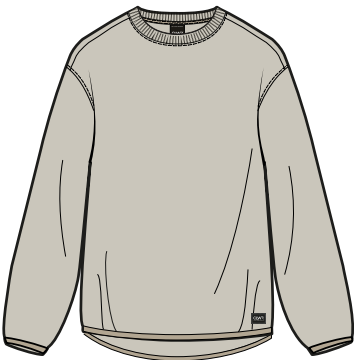
ART.NO: 7010324



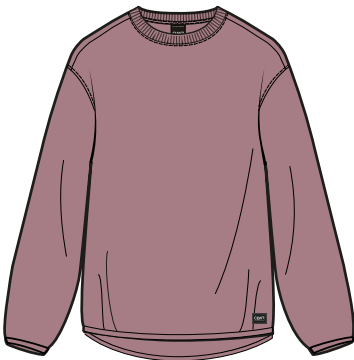
ART.NO: 7010324



ART.NO: 7210326



ART.NO: 7210326



ART.NO: 7210326



ART.NO: 7210327



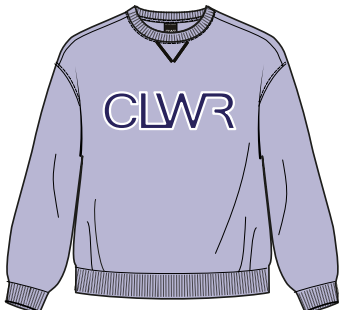
ART.NO: 7210327



ART.NO: 7210327



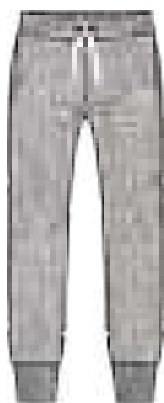
ART.NO: 7210328



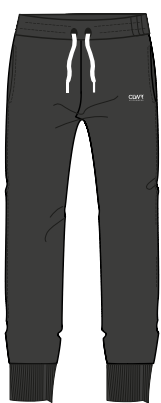
ART.NO: 7210328



ART.NO: 7210328



ART.NO: 7210267



ART.NO: 7210267



ART.NO: 7210264



Strut, slay, repeat.
Ladies, this one's
for you!



MEN
WOMEN
UNISEX
YOUTH
ACCESSORIES



ART.NO: 7210399



ART.NO: 7210399



ART.NO: 7210399



ART.NO: 7210399



ART.NO: 7210289



ART.NO: 7210289



ART.NO: 7210289



ART.NO: 7210402



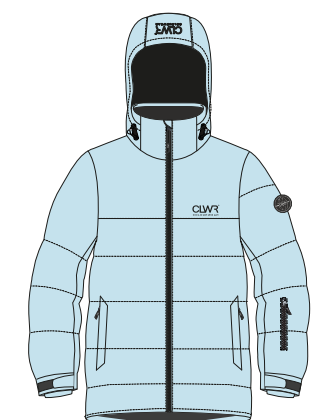
ART.NO: 7210402



ART.NO: 7210402



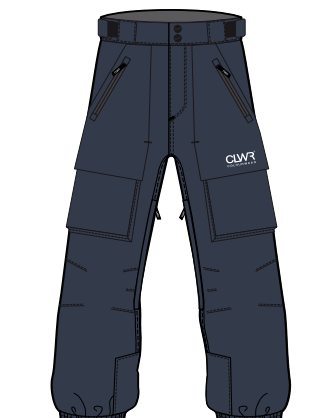
ART.NO: 7210404



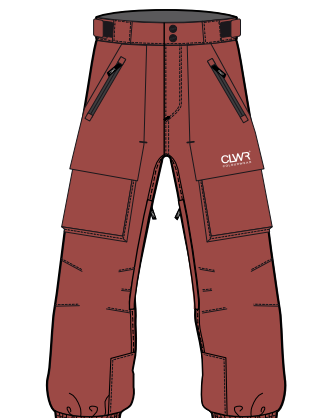
ART.NO: 7210404



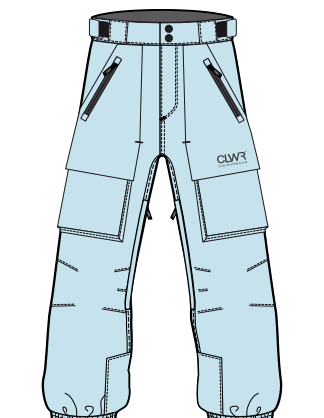
ART.NO: 7210404



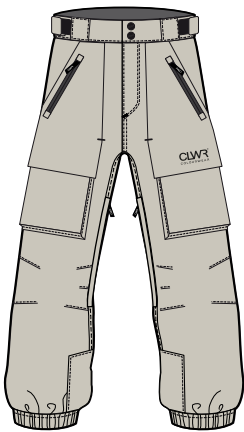
ART.NO: 7210401



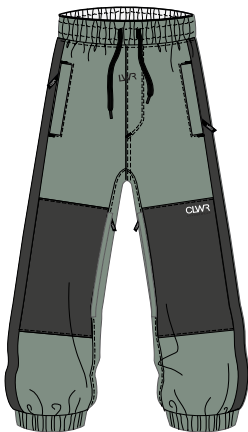
ART.NO: 7210401



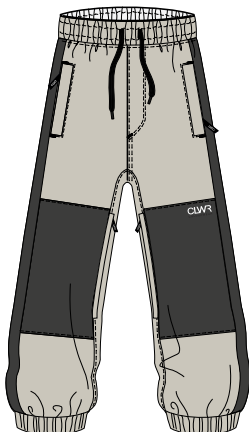
ART.NO: 7210401



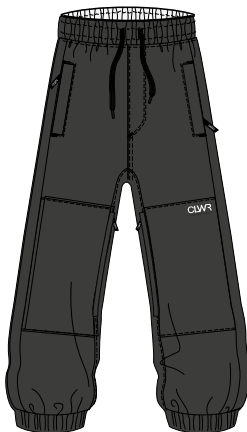
ART.NO: 7210401



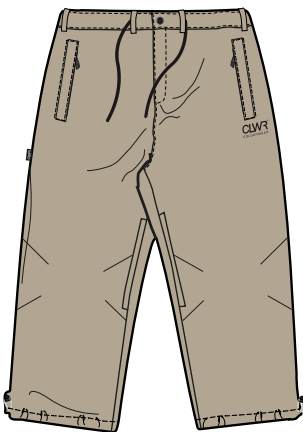
ART.NO: 7210312



ART.NO: 7210312



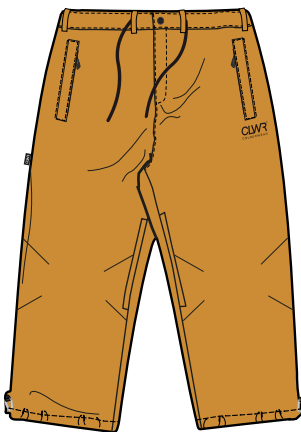
ART.NO: 7010312



ART.NO: 7210403



ART.NO: 7210403



ART.NO: 7210403



ART.NO: 7210303



ART.NO: 7210303



ART.NO: 7210303



ART.NO: 7210303



ART.NO: 7210303



ART.NO: 7210302



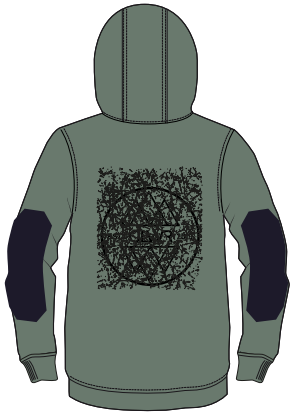
ART.NO: 7210302



ART.NO: 7210302



ART.NO: 7210302



ART.NO: 7210302

When boundaries
blur, style
emerges.

MEN
WOMEN
UNISEX
YOUTH
ACCESSORIES



ART.NO: 7210501



ART.NO: 7210501



ART.NO: 7210501



ART.NO: 7210501



ART.NO: 7210501



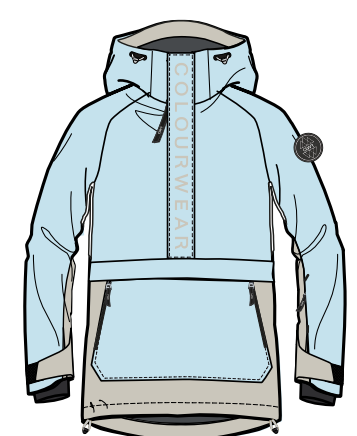
ART.NO: 7210502



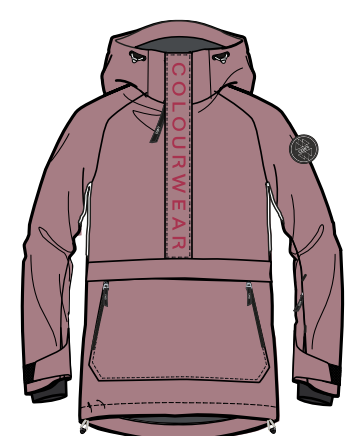
ART.NO: 7210502



ART.NO: 7210502



ART.NO: 7210503



ART.NO: 7210503



ART.NO: 7210503



ART.NO: 7210503



ART.NO: 7210504



ART.NO: 7210504



ART.NO: 7210504



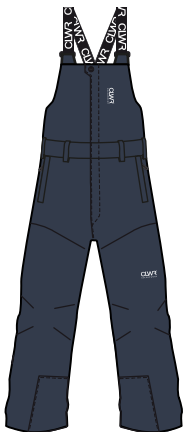
ART.NO: 7210505



ART.NO: 7210505



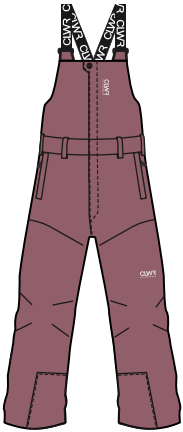
ART.NO: 7210505



ART.NO: 7210506



ART.NO: 7210506



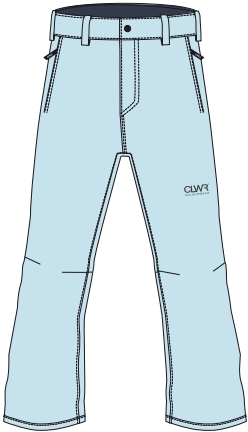
ART.NO: 7210506



ART.NO: 7210507



ART.NO: 7210507



ART.NO: 7210507



ART.NO: 7210507



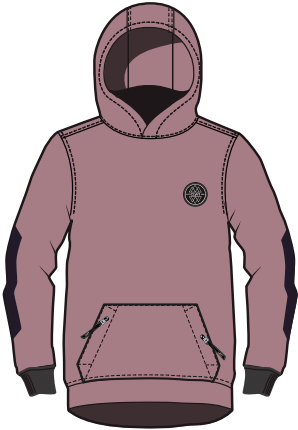
ART.NO: 7210507



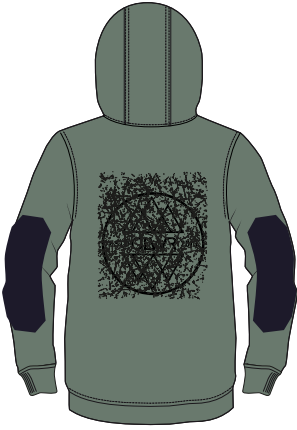
ART.NO: 7210508



ART.NO: 7210508



ART.NO: 7210508



ART.NO: 7210508



ART.NO: 7210510



ART.NO: 7210510



ART.NO: 7210510



ART.NO: 7210511



ART.NO: 7210511



ART.NO: 7210511



ART.NO: 7210511



ART.NO: 7210512



ART.NO: 7210512



ART.NO: 7210512



ART.NO: 7210512



MEN
WOMEN
UNISEX
YOUTH
ACCESSORIES



ART.NO: 7010344



ART.NO: 7010344



ART.NO: 7010344



ART.NO: 7010344



ART.NO: (U) 7210601
ART.NO: (Y) 7210610



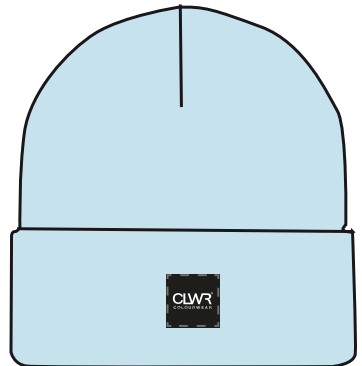
ART.NO: (U) 7210601
ART.NO: (Y) 7210610



ART.NO: (U) 7210601
ART.NO: (Y) 7210610



ART.NO: (U) 7210601
ART.NO: (Y) 7210610



ART.NO: (U) 7210197
ART.NO: (Y) 7210611



ART.NO: (U) 7210197
ART.NO: (Y) 7210611



ART.NO: (U) 7210197
ART.NO: (Y) 7210611



ART.NO: (U) 7210197
ART.NO: (Y) 7210611



ART.NO: 7210602



ART.NO: 7210602



ART.NO: 7210602



ART.NO: 7210602



ART.NO: 7210195



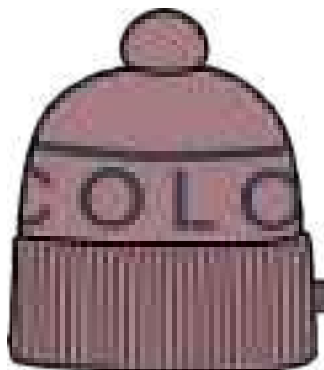
ART.NO: 7210195



ART.NO: 7210195



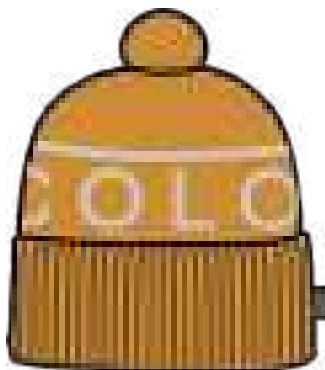
ART.NO: 7210195



ART.NO: (U) 7210603
ART.NO: (Y) 7210612



ART.NO: (U) 7210603
ART.NO: (Y) 7210612



ART.NO: (U) 7210603
ART.NO: (Y) 7210612



ART.NO: (U) 7210603
ART.NO: (Y) 7210612



ART.NO: 7210604



ART.NO: 7210604



ART.NO: 7210605



ART.NO: 7210605



ART.NO: 7210605



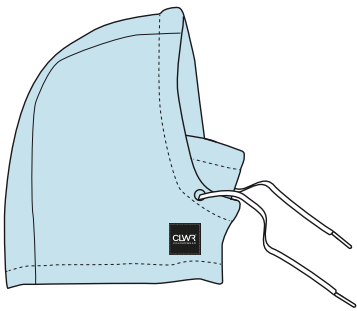
ART.NO: 7210606



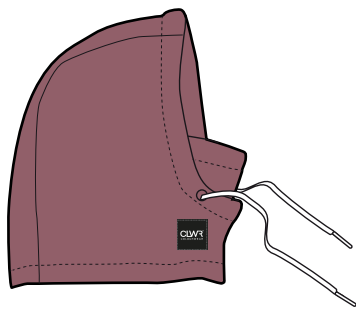
ART.NO: 7210606



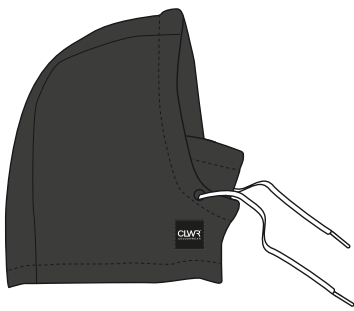
ART.NO: 7210606



ART.NO: (U) 7210607
ART.NO: (Y) 7210613



ART.NO: (U) 7210607
ART.NO: (Y) 7210613



ART.NO: (U) 7210607
ART.NO: (Y) 7210613



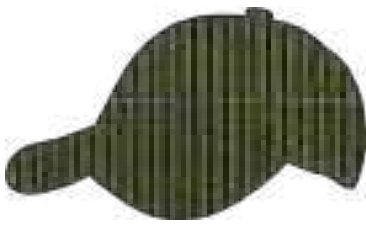
ART.NO: 7210609



ART.NO: 7210609



ART.NO: 7210608



ART.NO: 7210608



ART.NO: 7210345



ART.NO: 7210345



ART.NO: 7210345



ART.NO: 7210347



ART.NO: 7210347



ART.NO: 7210347



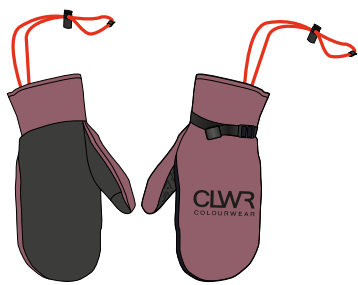
ART.NO: 7210615



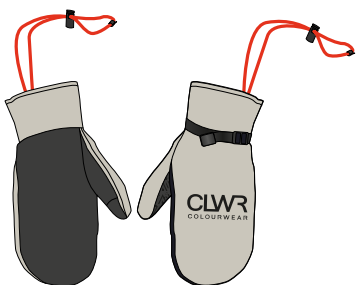
ART.NO: 7210615



ART.NO: 7210615



ART.NO: 7210614



ART.NO: 7210614



ART.NO: 7210614



ART.NO: 7210220



ART.NO: 7210220



ART.NO: 7210220



ART.NO: 7210221



ART.NO: 7210221

The icing
cake? on
No, the
cherry
on top!

A/W 24

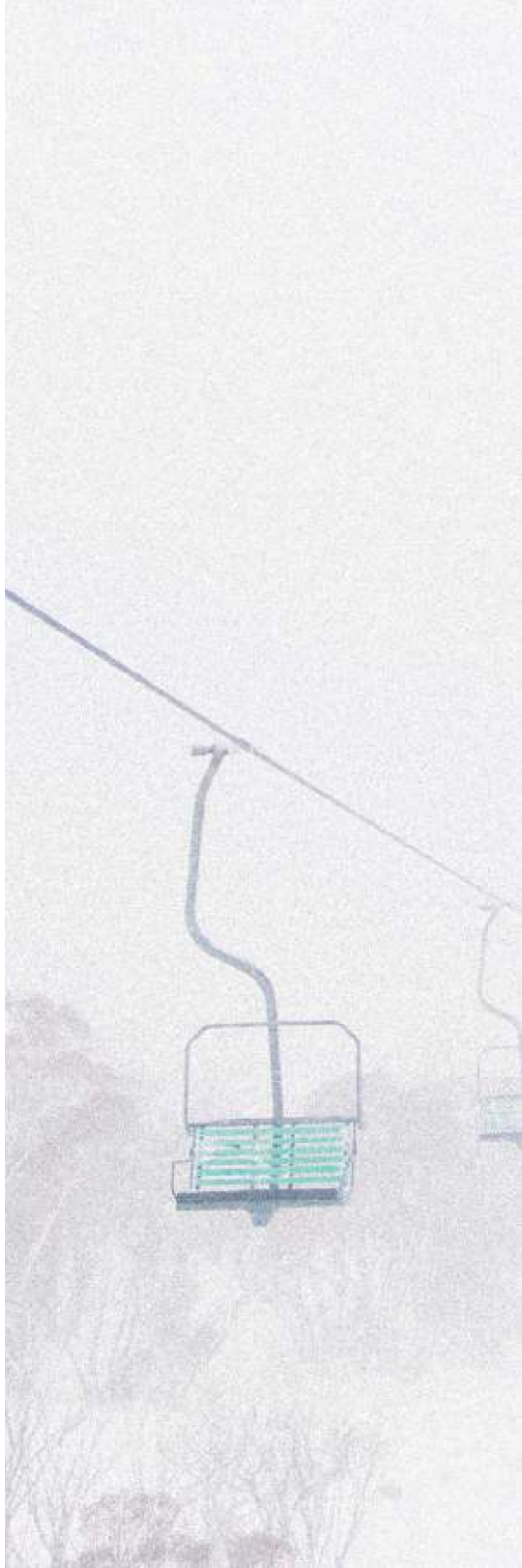
CLWR

COLLECTION

Gudmundsgatan 2
SE-41251 Gothenburg
Sweden

info@colourwear.com
www.colourwear.com

COLOURWEAR





**“PICK UP YA
PIECES AND SEE
YOU IN THE SLOPES”**



Throwing it
back, flippin,
It FORWARD

CLWR
COLOURWEAR